

**Anritsu** envision : ensure

# MT8220T

High-Performance Handheld Base Station Analyzer

400 MHz to 6 GHz Cable and Antenna Analyzer

150 kHz to 7.1 GHz Spectrum Analyzer

10 MHz to 7.1 GHz Power Meter



# BTS Master™ MT8220T Base Station Analyzer Introduction

## Overview



BTS Master MT8220T utilizing MA2700A Handheld InterferenceHunter™.

## Introduction

The BTS Master MT8220T is Anritsu's third generation high-performance handheld base station analyzer that has been specifically developed to advance the support for 4G wireless networks as well as installed 2G, 3G and WiMAX networks. The MT8220T includes:

- 20 MHz bandwidth modulation quality testing
- Vector Signal Generator (400 MHz to 6 GHz) for comprehensive DAS and receiver testing
- Convenient touch screen GUI
- Sweep modes for reliable interference hunting and analysis

The BTS Master features over 30 analyzers in one to meet virtually every measurement need. Standard features are:

- 2-port Cable and Antenna Analyzer: 400 MHz to 6 GHz
- Spectrum Analyzer: 150 kHz to 7.1 GHz
- Power Meter: 10 MHz to 7.1 GHz
- GPS receiver with antenna
- 3-year warranty

A user can select from many options including:

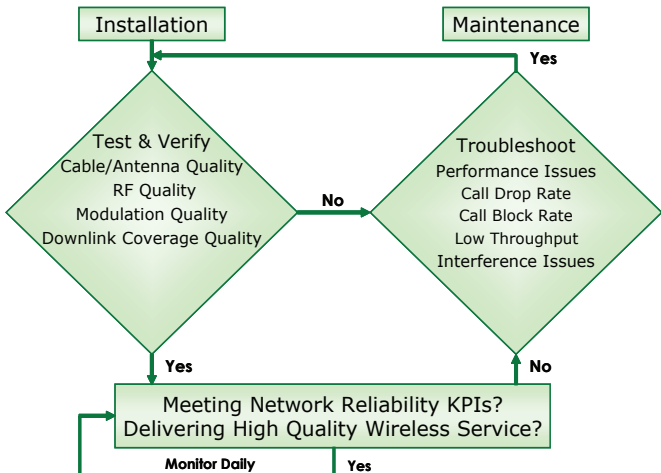
- High Accuracy Power Meter
- Interference Analyzer
- Channel Scanner
- 3GPP Wireless Measurements  
LTE/LTE-A FDD/TDD, GSM/GPRS/EDGE, W-CDMA/HSPA+, TD-SCDMA/HSPA+
- 3GPP2 Wireless Measurements  
CDMA, EV-DO
- IEEE 802.16 Wireless Measurements  
Fixed WiMAX, Mobile WiMAX
- CPRI RF Measurements

The wireless measurements have three methods for verifying the performance of a base station transmitter by measuring:

- RF Quality
- Modulation Quality
- Downlink Coverage Quality



BTS Master in RF Measurements Pass/Fail Mode



Installation and Maintenance Processes Supported by the BTS Master

## Meeting Key Performance Indicators (KPIs)

Degradation in KPIs, such as dropped call and/or blocked call rates or low data throughput due to a malfunction at the cell site or due to interference, can be easily and accurately diagnosed down to the base station field replaceable unit (FRU) or the offending interfering signal with the BTS Master.

## Line Sweep Tools™ (LST)

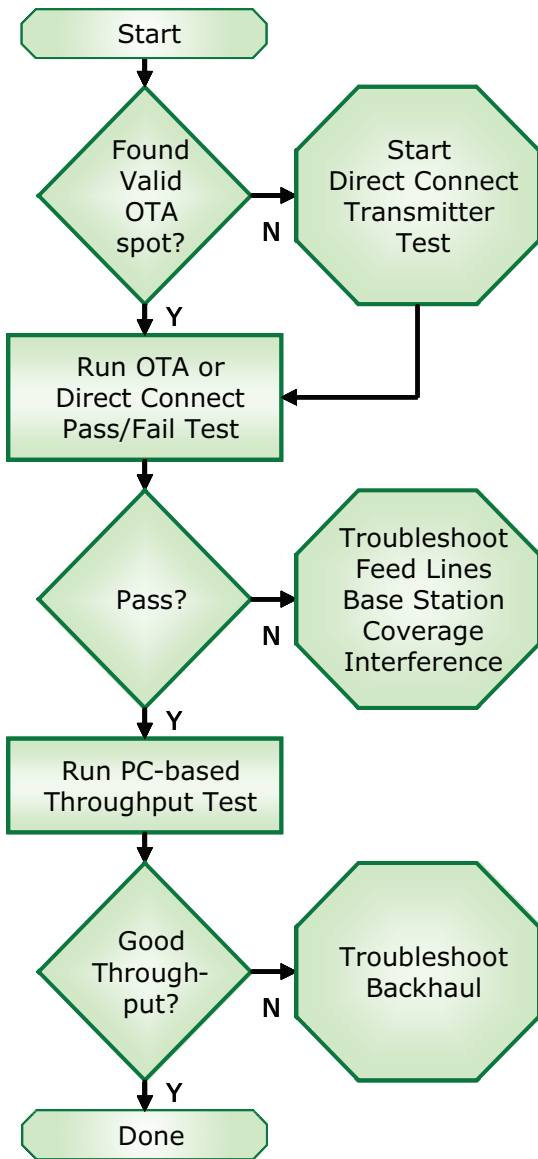
LST is a PC program that post processes cable and antenna measurement traces. It provides a powerful trace analysis and report generator for line sweepers.

## Master Software Tools™ (MST)

MST is a PC program that post processes spectrum analysis traces collected on your instrument. It provides powerful data analysis tools for spectrum clearing and interference monitoring.

With Anritsu's design know-how and demanding production testing and performance verification you can count on the BTS Master to give you years of reliable and dependable service.

## Overview (continued)



Fast Over-the-Air Pass/Fail Testing Process

### Troubleshooting Fast

An Anritsu advantage is its wireless measurements Over-the-Air (OTA) Pass/Fail Tests. Technicians and RF engineers can quickly determine the health of a cell site with a one-step Pass/Fail test. A one-step OTA Pass/Fail test verifies:

- Antenna Feed Line Quality
- Base Station RF Quality
- Base Station Modulation Quality

If a cell site passes, the technician can move on to the next cell site. If the test fails, the BTS Master equips the technician to troubleshoot:

- Feed lines and antenna systems
- Base station field replaceable units
- Downlink coverage issues
- Interference problems
- Uplink noise

By quickly determining the health of the cell site with Pass/Fail testing, the cell site technician becomes more productive, and the BTS Master equips him with the tools to properly diagnose the root-cause of the problem minimizing costly “no trouble found” parts and service calls.

### Network Reliability

Studies have shown that network reliability plays a significant part in subscriber churn. Leading reasons stated for churn are:

- Dropped calls
- Poor coverage
- Network outages

As wireless users come to depend more and more on their wireless service, they expect more and more in network performance. This makes it more critical than ever to meet your KPI optimization goals for network availability, network quality, and network coverage. Ultimately it is about eliminating reasons for demanding subscribers to churn.

### Network Maintenance and Return on Investment

By outfitting cell site technicians with BTS Masters an operator can attack these reasons for churn. Benchmarking undertaken by Anritsu has shown that technicians equipped with base station analyzers are provided with the necessary tools to troubleshoot degrading KPIs which in turn can reduce churn.

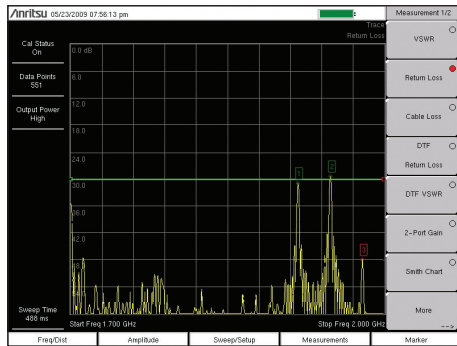
Learn what the return on investment is on equipping more technicians with the BTS Master Base Station Analyzers from your local Anritsu sales professional. The BTS Master Base Station Analyzer can become your vital tool to achieving optimal network performance.



# BTS Master™ MT8220T Base Station Analyzer Features

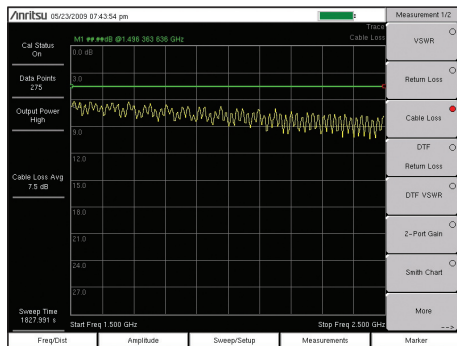


## Cable and Antenna Analyzer



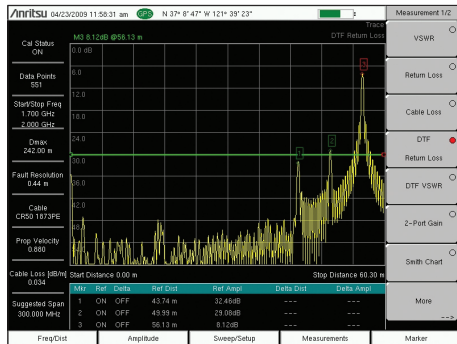
### Return Loss/VSWR Measurement

Poor Return Loss/VSWR can damage transmitters, reduce the coverage area, increase dropped and blocked calls, and lower data rates.



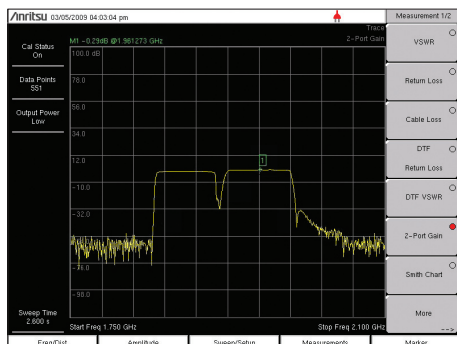
### Cable Loss Measurement

This is an important commissioning check. Excessive loss reduces the coverage area and can mask return loss issues, creating false good readings later.



### Distance-to-Fault (DTF) Measurement

DTF can be used to identify and locate faulty cable components or connector pairs with poor Return Loss/VSWR in meters or feet.



### 2-port Gain Measurement

Poor antenna isolation on base stations and repeaters and degraded tower mounted amplifiers can cause dropped and blocked calls.

## Cable and Antenna Analyzer

The BTS Master features 1-port and 2-port Cable and Antenna Analyzer and a PIM (Passive Intermodulation) Analyzer to be able to test and verify the performance of nearly every feed-line and antenna component. This includes:

- Connectors
- Cables/Jumpers
- Antenna Isolation
- Diplexers/Duplexers
- Tower Mounted Amplifiers

The goal of these measurements is to maximize the coverage, data rate and capacity with problem-free antenna systems minimizing dropped calls and blocked calls for a good customer experience.

## Antenna Systems Failure Mechanisms

Maintenance is an on-going requirement as antenna systems' performance can degrade at any point in time due to:

- Loose connectors
- Improperly weatherized connectors
- Pinched cables
- Poor grounding
- Corroded connectors
- Lightning strikes
- Strong winds misaligning antennas
- Rain getting into cables
- Bullet holes/nails in the cable
- Intermodulation of multiple signals

## Making Measurements Easier

The BTS Master provides features for making measurements easier to perform and to analyze test results such as:

- FlexCal™ eliminates the need to recalibrate when changing frequencies
- High RF Immunity for testing in harsh RF environments
- Trace Overlay compares reference traces to see changes over time
- Limit Lines with alarms for providing reference standards
- High power output to test tower-top components without climbing the tower
- Internal bias-tee to power up TMAs for testing when off-line
- GPS tagging of data to verify location of tests
- Line Sweep Tools for post-analysis and report generation

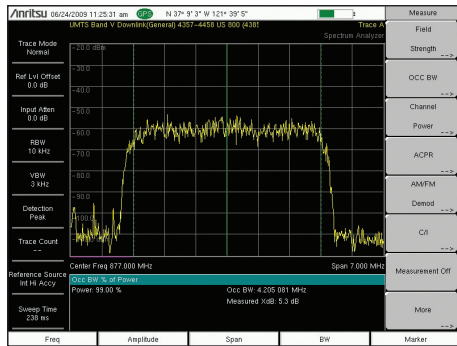
## Cable and Antenna Analyzer Measurements

- VSWR
- Return Loss
- Cable Loss
- Distance-to-Fault (DTF) Return Loss
- Distance-to-Fault (DTF) VSWR
- 1-port Phase
- 2-port Phase
- 2-port Gain
- Smith Chart

# BTS Master™ MT8220T Base Station Analyzer Features

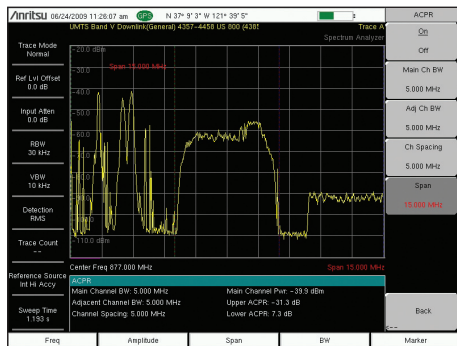


## Spectrum Analyzer



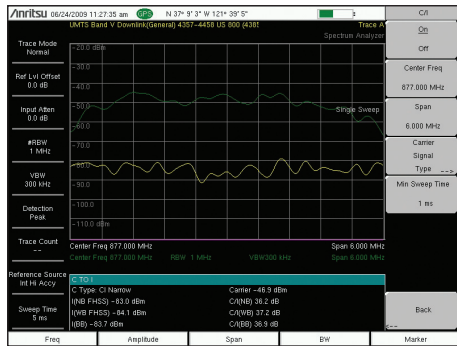
### Occupied Bandwidth

Excessive occupied bandwidth can create interference with adjacent channels or be a sign of poor signal quality, leading to dropped calls.



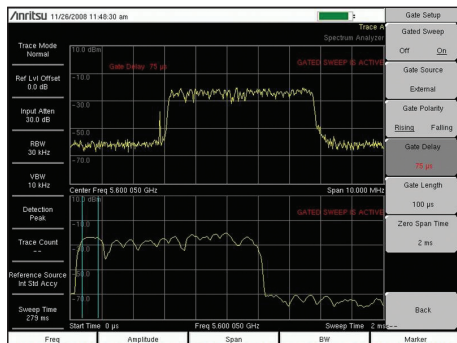
### Adjacent Channel Power Ratio (ACPR)

High ACPR will create interference for neighboring carriers. This is also an indication of low signal quality and low capacity, which can lead to blocked calls.



### Carrier-to-Interference (C/I)

Low C/I ratios will cause coverage issues including dropped calls, blocked calls, and other handset reception problems.



### Gated Sweep - Option 0090

The gate is in the off-time of this WIMAX signal, which would let the user see interfering signals or user signals when the base station is not transmitting.

## Spectrum Analyzer

The BTS Master features a powerful spectrum analyzer with unmatched performance in a base station analyzer for:

- Sensitivity
- Dynamic Range
- Phase Noise
- Frequency Accuracy
- Resolution Bandwidth (RBW)
- Sweep Speed

The goal of the spectrum analyzer's measurements is to be able to monitor, measure, and analyze RF signals and their environments. It finds rogue signals, measures carriers and distortion, and verifies base stations' signal performance. It validates carrier frequency and identifies desired and undesired signals.

### Simple But Powerful

The BTS Master features dedicated routines for one-button measurements, and for more in-depth analysis the technician has control over settings and features not even found on lab-grade benchtop spectrum analyzers, for instance:

- Multiple sweep detection methods – true RMS detector, quasi-peak, ...
- Multiple sweep modes including Burst Detect for fast transient signal capture
- Multiple traces and control – three traces, trace math, ...
- Advanced marker functions – noise marker, frequency counter, ...
- Advanced limit line functions – one-button envelope creation, relative, ...
- Save-on-Event – automatically saves a sweep when crossing a limit line
- Gated sweep - view pulsed or burst signals only when they are on, or off
- I/Q waveform capture - transfer captured signals for further analysis and troubleshooting

### GPS-Assisted Frequency Accuracy

With the standard GPS function, frequency accuracy is  $2.5 \times 10^{-8}$ . After the GPS antenna is disconnected, the accuracy is  $5.0 \times 10^{-8}$  for three days. Also all measurements can be GPS tagged for exporting to maps.

### Rx Noise Floor Testing

The BTS Master can measure the Rx noise floor on the uplink of a base station using the channel power measurement. An elevated noise floor indicates interference or PIM and leads to call blocking, denial of services, call drops, low data rate, and low capacity.

## Measurements

### One Button Measurements

- Field Strength – in dBm/m<sup>2</sup> or dBmV/m
- Occupied Bandwidth - 1% to 99% of power
- Channel Power - in specified bandwidth
- ACPR - adjacent channel power ratio
- AM/FM/SSB Demodulation - audio out only
- C/I - carrier-to-interference ratio
- Gated Sweep – Option 0090
- I/Q Waveform Capture – Option 0024

### Sweep Functions

#### Sweep

- Single/Continuous, Manual Trigger, Reset, Minimum Sweep Time

#### Sweep Mode

- Fast, Performance, No FFT, Burst Detect

#### Detection

- Peak, RMS, Negative, Sample, Quasi-peak

#### Triggers

- Free Run, External, Video, Change Position, Manual

### Trace Functions

#### Traces

- 1-3 Traces (A, B, C), View/Blank, Write/Hold

#### Trace A Operations

- Normal, Max Hold, Min Hold, Average, Number of Averages, (always the live trace)

#### Trace B Operations

- A → B, B ← C, Max Hold, Min Hold

#### Trace C Operations

- A → C, B ← C, Max Hold, Min Hold, A - B → C, B - A → C, Relative Reference (dB), Scale

### Marker Functions

#### Markers

- 1-6 Markers each with a Delta Marker, or Marker 1 Reference with 6 Delta Markers

#### Marker Types

- Fixed, Tracking, Noise, Frequency Counter

#### Marker Auto-Position

- Peak Search, Next Peak (Right/Left), Peak Threshold %, To Channel, To Center, To Reference Level, Delta Marker to Span

#### Marker Table

- 1-6 markers' frequency & amplitude plus delta markers' frequency offset & amplitude

### Limit Line Functions

#### Limit Lines

- Upper/Lower, Limit Alarm, Default Limit

#### Limit Line Edit

- Frequency, Amplitude, Add/Delete Point, Add Vertical, Next Point Left/Right

#### Limit Line Move

- To Current Center Frequency, By dB or Hz, To Marker 1, Offset from Marker 1

#### Limit Line Envelope

- Create, Update Amplitude, Number of Points (41), Offset, Shape Square/Slope

#### Limit Line Advanced

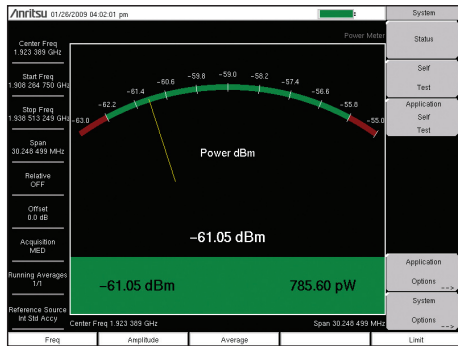
- Absolute/Relative, Mirror, Save/Recall

# BTS Master™ MT8220T Base Station Analyzer Features



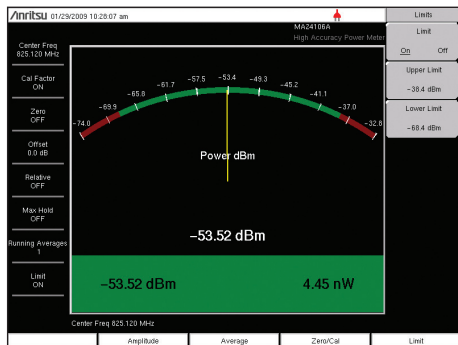
## Power Meter

## High Accuracy Power Meter (Option 0019)



### Power Meter (built-in)

Power is displayed in an analog type display and, supports both Watts and dBm. RMS averaging can be set to low, medium, or high.



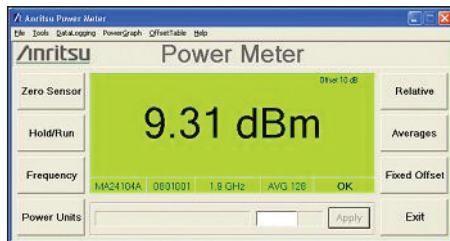
### High Accuracy Power Meter (Option 0019)

Requires external power sensor with convenient connection via a USB A/mini-B cable. Use upper/ lower limit activation during pass/fail measurements.



### Power Sensors

Anritsu offers a family of Power Sensors for your power measurement requirements. They are compact enough to fit in your shirt pocket.



### PC Power Meter

These power sensors can be used with a PC running Microsoft Windows® via USB. A front panel display makes the PC appear like a traditional power meter.

### Power Meters

The BTS Master offers as standard a built-in Power Meter utilizing the Spectrum Analyzer and an optional High Accuracy Power Meter requiring external power sensors.

Setting the transmitter output power of a base station properly is critical to the overall operation of a wireless network. A 1.5 dB change in power levels means a 15% change in coverage area.

Too much power means overlapping coverage which translates into cell-to-cell self interference. Too little power, too little coverage, creates island cells with non-overlapping cell sites and reduced in-building coverage. High or low values will cause dead zones/dropped calls, lower data rates/reduced capacity near cell edges, and cell loading imbalances and blocked calls.

### High Accuracy Power Meter (Option 0019)

For the most accurate power measurement requirements select the high accuracy measurement option with a choice of sensors with:

- Frequency ranges: 10 MHz to 26 GHz
- Power ranges: -40 dBm to +51.76 dBm
- Measurement uncertainties:  $\leq \pm 0.18$  dB

These sensors enable users to make accurate measurements for CW and digitally modulated signals for 2G/3G and 4G wireless networks.

The power sensor easily connects to the BTS Master via a USB A/mini-B cable. An additional benefit of using the USB connection is that a separate DC supply (or battery) is not needed since the necessary power is supplied by the USB port.

### PC Power Meter

These power sensors can be used with a PC running Microsoft Windows® via USB. They come with PowerXpert™ application, a data analysis and control software. The application has abundant features, such as data logging, power versus time graph, big numerical display, and many more, that enable quick and accurate measurements.

### Remote Power Monitoring via LAN

A USB-to-LAN hub converter enables power monitoring via the Internet across continents, if desired.

### Power Sensors

#### PSN50

High Accuracy RF Power Sensor  
50 MHz to 6 GHz  
Type N(m), 50  $\Omega$   
-30 dBm to +20 dBm  
(.001 mW to 100 mW)  
True-RMS

#### MA24105A

Inline Peak Power Sensor  
350 MHz to 4 GHz  
Type N(f), 50  $\Omega$   
+3 dBm to +51.76 dBm  
(2 mW to 150 W)  
True-RMS

#### MA24106A

High Accuracy RF Power Sensor  
50 MHz to 6 GHz  
-40 dBm to +23 dBm  
(0.1  $\mu$ W to 200 mW)  
True-RMS

#### MA24108A

Microwave USB Power Sensor  
10 MHz to 8 GHz  
-40 dBm to +20 dBm  
(0.1  $\mu$ W to 100 mW)  
True-RMS  
Slot Power  
Burst Average Power

#### MA24118A

Microwave USB Power Sensor  
10 MHz to 18 GHz,  
-40 dBm to +20 dBm  
(0.1  $\mu$ W to 100 mW)  
True-RMS  
Slot Power  
Burst Average Power

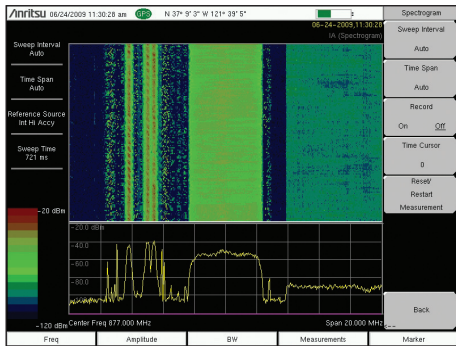
#### MA24126A

Microwave USB Power Sensor  
10 MHz to 26 GHz,  
-40 dBm to +20 dBm  
(0.1  $\mu$ W to 100 mW)  
True-RMS  
Slot Power  
Burst Average Power



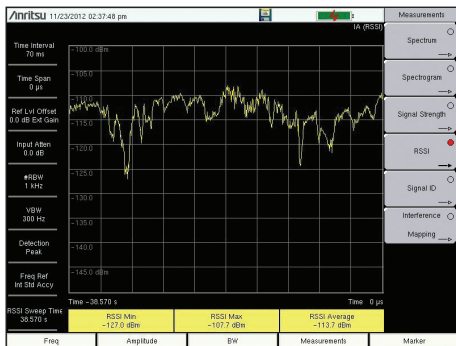
## Interference Analyzer (Option 0025)

## Channel Scanner (Option 0027)



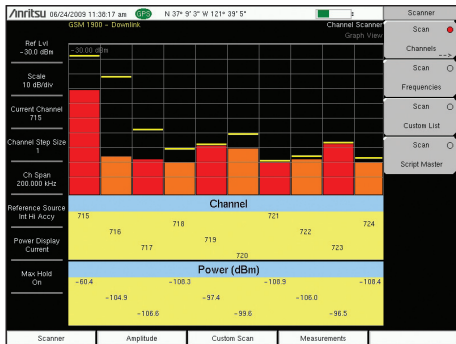
### Spectrogram

For identifying intermittent interference and tracking signal levels over time for up to 1 week with an external USB flash drive.



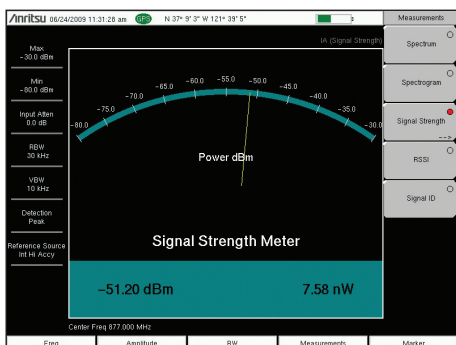
### Received Signal Strength Indicator (RSSI)

Used to observe the signal strength of a single frequency over time. Data can be collected for up to one week with an external USB flash drive.



### Channel Scanner

Works on any signal and is useful when looking for IM or harmonics. Can help spot signals widely separated in frequency that turn on and off together.



### Signal Strength Meter

Can locate an interfering signal, by using a directional antenna and measuring the signal strength and by an audible beep proportional to its strength.

## Interference Analyzer (Option 0025) Channel Scanner (Option 0027)

Interference is a continuously growing problem for wireless network operators. Compounding the problem are the many sources that can generate interference such as:

- Intentional Radiators
- Unintentional Radiators
- Self Interference

Interference causes Carrier-to-Interference degradation robbing the network of capacity. In many instances, interference can cause an outage to a sector, a cell, and/or neighboring cells. The goal of these measurements is to resolve interference issues as quickly as possible.

### Monitoring Interference

The BTS Master offers many tools for monitoring intermittent interferers over time to determine patterns:

- Spectrogram
- Received Signal Strength Indicator
- Remote Monitoring over the Internet
- Save-on-Event – crossing a limit line

Master Software Tools for your PC features diagnostic tools for efficient analysis of the data collected during interference monitoring. These features include:

- Folder Spectrogram – creates a composite file of multiple traces for quick review
- Movie playback – playback data in the familiar frequency domain view
- Histogram – filter data and search for number of occurrences and time of day
- 3D Spectrogram – for in-depth analysis with 3-axis rotation viewing control

### Identifying Interference

The BTS Master provides several tools to identify the interference – either from a neighboring wireless operator, illegal repeater or jammer, or self-interference:

- Signal ID (up to 12 signals at once)
- Signal Analyzer Over-the-Air Scanners
- Channel Scanner (up to 1200 channels, 20 at a time)

### Interference Mapping

Once interference has been identified, its location can be mapped with the help of the MA2700A Interference Hunter™ (see separate technical data sheet) and suitable directional antenna. Maps can be downloaded to the BTS Master using Anritsu's easyMap Tools™ software available from Anritsu.com.

## Interference Analyzer Measurements

- Spectrogram
- Signal Strength Meter
- Received Signal Strength Indicator (RSSI)
- Signal ID (up to 12 signals)

- FM
- GSM/GPRS/EDGE
- W-CDMA/HSPA+
- CDMA/EV-DO
- Wi-Fi

### Interference Mapping

- Draw multiple bearings on on-screen maps
- Pan and Zoom on-screen maps
- Support for MA2700A Handheld Interference Hunter

### Spectrum

- Field Strength – in dBm/m<sup>2</sup> or dBmV/m
- Occupied Bandwidth - 1% to 99% of power
- Channel Power - in specified bandwidth
- ACPR - adjacent channel power ratio
- AM/FM/SSB Demodulation - audio out only
- C/I - carrier-to-interference ratio
- SEM - spectral emission mask

### Channel Scanner

#### Scan

- 20 channels at once, by frequency or channel
- Non-contiguous channels
- Different channel bandwidths in one scan

#### Display

- Current plus Max hold display
- Graph View
- Table View

#### Script Master™

- Up to 1200 Channels
- Auto-repeat sets of 20 channels and total
- Auto-Save with GPS tagging



### Interference Hunting

The BTS Master can be used with the MA2700A Interference Hunter and directional antennas to track down sources of interference.



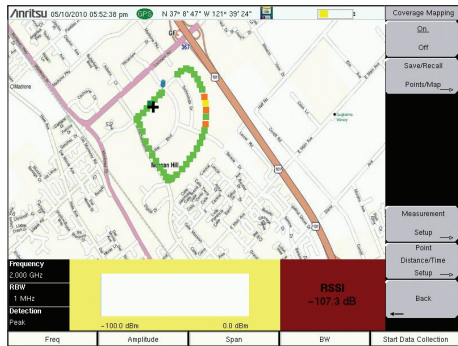
### Interference Mapping

Maps can be downloaded to the BTS Master to help identify sources of interfering signals. Maps can be panned and zoomed to further aid the hunt for interference.



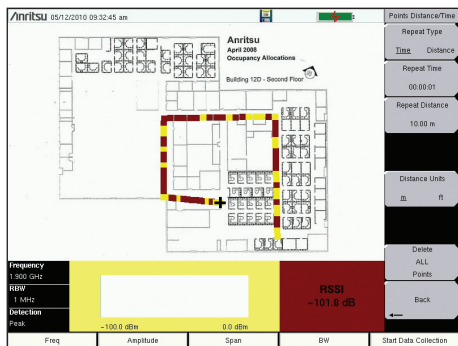
## Coverage Mapping (Option 0431)

## Gated Sweep (Option 0090)



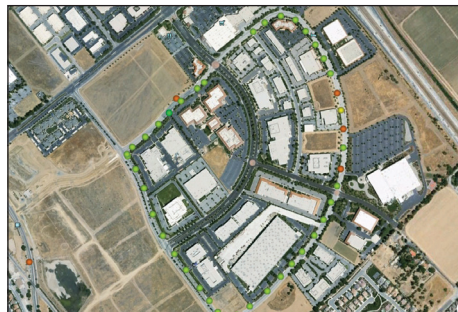
### On-screen Outdoor Coverage Mapping

Enables a maintenance technician to make low cost coverage measurements to quickly verify coverage around a base station site.



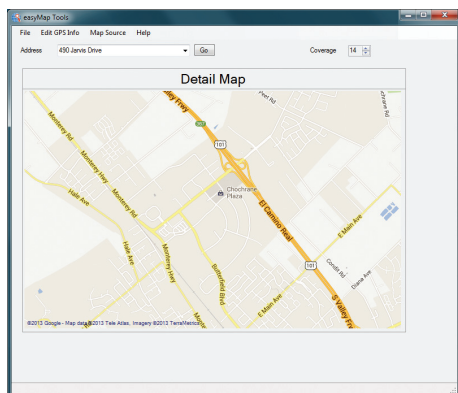
### On-screen Indoor Coverage Mapping

Import an image of an office floor plan and use the start-walk-stop method to record coverage strength. Validates coverage for enterprise accounts.



### Plot Coverage on PC-based Map

Once coverage data has been collected on the instrument, the data can be imported into a mapping program for further review and reporting.



### easyMap Tools™

easyMap is a PC-based program that allows you to capture maps with GPS coordinates that can be imported into the instrument via a USB drive.

## Coverage Mapping

There is a growing demand for low cost coverage mapping solutions. Anritsu's Coverage Mapping measurements option provides wireless service providers, public safety users, land mobile radio operators, and government officials with indoor and outdoor mapping capabilities.

## Outdoor Mapping

With a GPS antenna connected to the instrument and a valid GPS signal, the instrument monitors RSSI and ACPR levels automatically. Using a map created with easyMap, the instrument displays maps, the location of the measurement, and a special color code for the power level. The refresh rate can be set up in time (1 s, minimum) or distance.

The overall amplitude accuracy coupled with the GPS update rate ensures accurate and reliable mapping results.

## Indoor Mapping

When there is no GPS signal valid, the BTS Master uses a start-walk-stop approach to record RSSI and ACPR levels. You can set the update rate, start location, and end location and the interpolated points will be displayed on the map.

## Export KML Files

Save files as KML or JPEG. Open KML files with Google Earth™. When opening up a pin in Google Earth, center frequency, detection method, measurement type, and RBW are shown on screen.

## easyMap Tools™

The easyMap program creates maps on your PC compatible with the BTS Master. Maps are created by typing in the address or by converting existing JPEG, TIFF, BMP, GIF, and PNG files to MAP files. Utilizing the built-in zoom in and zoom out features, it is easy to create maps of the desired location on your PC and transfer to the instrument with a USB flash drive. easyMap also includes a GPS editor for inputting latitude and longitude information of maps from different formats.

## Coverage Mapping Measurements

Spectrum Analyzer Mode

- ACPR
- RSSI

## Gated Sweep

Mode

- Spectrum Analyzer, Sweep

Trigger

- External TTL

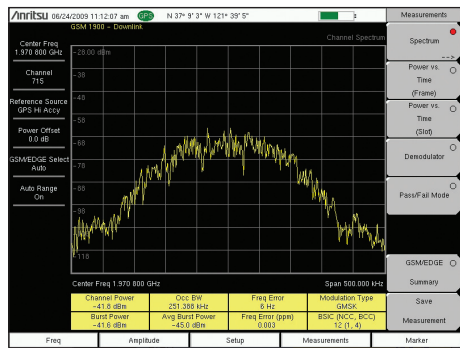
Setup

- Gated Sweep (On/Off)
- Gate Polarity (Rising, Falling)
- Gate Delay (0 ms to 65 ms typical)
- Gate Length (1 μs to 65 ms typical)
- Zero Span Time



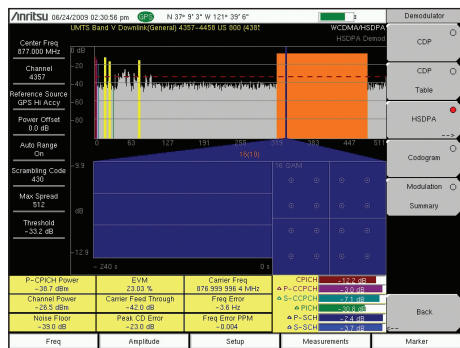
# BTS Master™ MT8220T Base Station Analyzer Features

## Introduction to Wireless Measurements



### RF Measurement - GSM

High Frequency Error will cause calls to drop when mobiles travel at higher speed. In some cases, cell phones cannot hand off into, or out of the cell.



### Demodulation - HSPA+

This is the single most important signal quality measurement. Poor EVM leads to dropped calls, low data rate, low sector capacity, and blocked calls.

Limit	Rho	Adjusted Rho	Multipath	Pilot Dominance	Pilot Power	Pass/Fail Status
1	0.861	0.975	0.0	10.5	-31.4	Pass
2	0.895	1.000	0.1	11.2	-32.3	Pass
3	0.884	0.888	0.0	11.5	-33.4	Pass
4	0.882	0.937	0.0	11.1	-33.5	Pass
5	0.875	0.987	0.0	11.0	-33.7	Pass
6	0.878	1.000	0.1	10.8	-33.9	Pass
7	0.863	0.987	0.0	11.5	-33.4	Pass
8	0.825	0.932	0.1	11.7	-33.8	Pass
9	0.880	0.984	0.0	11.9	-33.5	Pass
10	0.929	1.000	0.0	11.5	-33.7	Pass
<b>Avg</b>	<b>0.879</b>	<b>0.985</b>	<b>0.0</b>	<b>11.3</b>	<b>-33.5</b>	<b>Pass</b>

### Over-the-Air Measurement - CDMA

Having low multi-path and high pilot dominance is required for quality Rho measurements OTA. Poor Rho leads to dropped and blocked calls, and low data rate.

Freq Error	-2.6 Hz
Occupied BW	8.963 MHz
Carrier Frequency	750.999 997 MHz
Channel Power	-60.3 dBm
Ref Signal (RS) Power	-77.8 dBm
Sync Signal (SS) Power	-85.5 dBm
EVM (rms)	35.40 %
PBCH Power	-77.3 dBm
PCFICH Power	-87.0 dBm
Spectral Emission Mask	Pass

### Measurement Summary - LTE

Having a summary of all key measurements is a quick way for a technician to see the health of the base station and record the measurements for reference.

## Wireless Measurements

The BTS Master features measurements for the major wireless standards around the world. They are designed to test and verify the:

- RF Quality
- Modulation Quality
- Downlink Coverage Quality

of the base stations' transmitters. The goals of these tests are to improve the Key Performance Indicators (KPIs) associated with:

- Call Drop Rate
- Call Block Rate
- Low Data Throughput

By understanding which test to perform on the BTS Master when the KPIs degrade to an unacceptable level, a technician can troubleshoot down to the Field Replacement Unit (FRU) in the base station's transmitter chain. This will minimize the problem of costly no trouble founds (NTF) associated with card swapping. This will allow you to have a lower inventory of spare parts as they are used more efficiently.

## Troubleshooting Guides

The screen shots on this page are all measurements, made over-the-air with the MT8220T on commercial base stations carrying live traffic. To understand when, where, how, and why you make these measurements, Anritsu publishes Troubleshooting Guides which explain for each measurement the:

- Guidelines for a good measurement
- Consequences of a poor measurement
- Common faults in a base station

These *Troubleshooting Guides for Base Stations* are one-page each per wireless standard. They are printed on tear-resistant and smudge-resistant paper and are designed to fit in the soft case of the instrument for easy reference in the field. They are complimentary and their part numbers can be found in the ordering information.

- LTE Base Stations
- TD-LTE Base Stations
- GSM/GPRS/EDGE Base Stations
- W-CDMA/HSPA+ Base Stations
- CDMA Base Stations
- EV-DO Base Stations
- Fixed WiMAX Base Stations
- Mobile WiMAX Base Stations
- TD-SCDMA/HSPA+ Base Stations

## Wireless Measurements

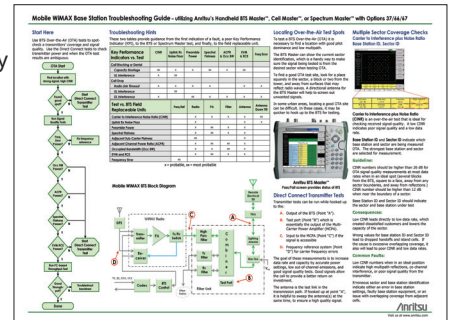
LTE/LTE-A FDD/TDD  
GSM/GPRS/EDGE  
W-CDMA/HSPA+  
CDMA /EV-DO  
Fixed and Mobile WiMAX  
TD-SCDMA/HSPA+

## Typical Measurements

RF Measurements  
Demodulation  
Over-the-Air Measurements

## Features

Measurement Summary Displays  
Pass/Fail Limit Testing

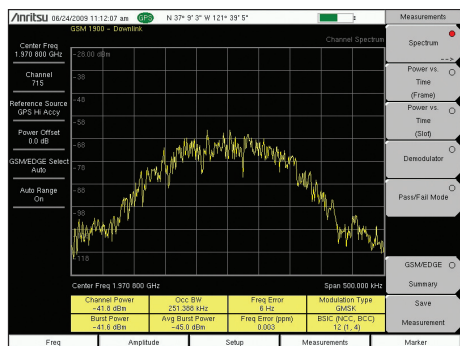


Troubleshooting guide

# BTS Master™ MT8220T Base Station Analyzer Features

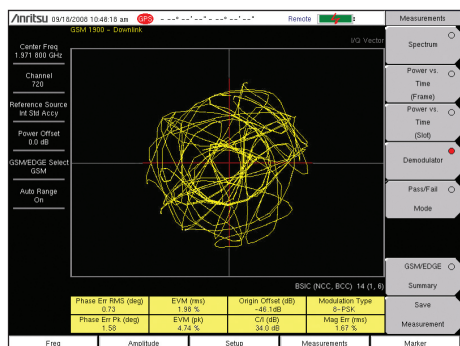


## GSM/GPRS/EDGE Measurements (Option 0880)



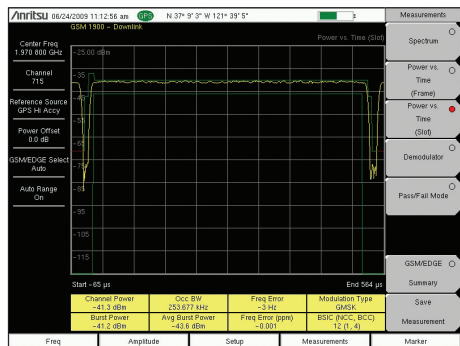
### RF Measurement – Occupied Bandwidth

Excessive occupied bandwidth can create interference with adjacent channels or be a sign of poor signal quality, leading to dropped calls.



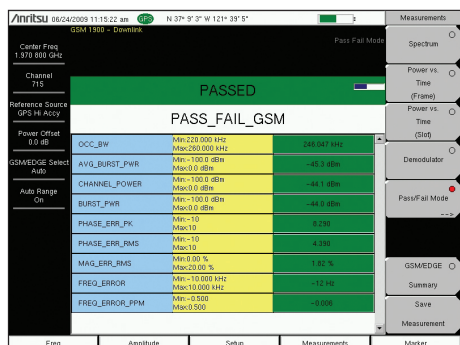
### Demodulation – Error Vector Magnitude (EVM)

This is the single most important signal quality measurement. Poor EVM leads to dropped calls, low data rate, low sector capacity, and blocked calls.



### RF Measurement – Average Burst Power

High or low values will create larger areas of cell-to-cell interference and create lower data rates near cell edges. Low values create dropouts and dead zones.



### Pass/Fail Test

Set up common test limits, or sets of limits, for each instrument. Inconsistent settings between base stations lead to inconsistent network behavior.

## GSM/GPRS/EDGE Measurements

The BTS Master features two GSM/GPRS/EDGE measurement modes.

- RF Measurements
- Demodulation

The goal of these measurements is to increase data rate and capacity by accurate power settings, ensuring low out-of-channel emissions, and good signal quality. These attributes help to create a low dropped call rate, a low blocked call rate, and a good customer experience.

Cell site technicians or RF engineers can make measurements Over-the-Air (OTA) to spot-check a transmitter's coverage and signal quality without taking the cell site off-line. When the OTA test results are ambiguous, one can directly connect to the base station to check the signal quality and transmitter power.

For easy identification of which cell you are measuring, the Base Station Identity Code (BSIC) gives the base station id, the Network Color Code (NCC) identifies the owner of the network, and the Base Station Color Code (BCC) provides the sector information.

## Carrier-to-Interference (C/I)

C/I indicates the quality of the received signal. It also can be used to identify areas of poor signal quality. Low C/I ratios will cause coverage issues including dropped calls, blocked calls, and other handset reception problems.

## Phase Error

Phase Error is a measure of the phase difference between an ideal and actual GMSK modulated voice signal. High phase error leads to dropped calls, blocked calls, and missed handoffs.

## Origin Offset

Origin Offset is a measure of the DC power leaking through local oscillators and mixers. A high Origin Offset will worsen EVM and Phase Error measurements and create higher dropped call rates.

## Power versus Time (Slot and Frame)

Power versus Time (Slot and Frame) should be used if the GSM base station is setup to turn RF power off between timeslots. When used OTA, this measurement can also spot GSM signals from other cells. Violations of the mask create dropped calls, low capacity, and small service area issues.

## RF Measurements

- Channel Spectrum
- Channel Power
- Occupied Bandwidth
- Burst Power
- Average Burst Power
- Frequency Error
- Modulation Type
- BSIC (NCC, BCC)
- Multi-channel Spectrum
- Power vs. Time (Frame/Slot)
- Channel Power
- Occupied Bandwidth
- Burst Power
- Average Burst Power
- Frequency Error
- Modulation Type
- BSIC (NCC, BCC)

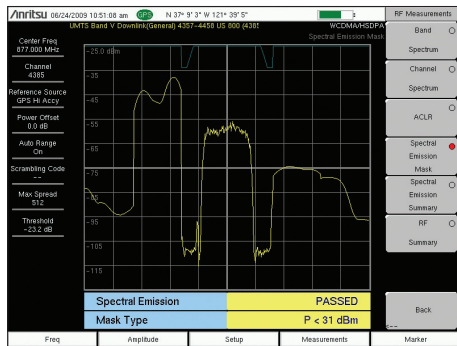
## Demodulation

- Phase Error
- EVM
- Origin Offset
- C/I
- Modulation Type
- Magnitude Error
- BSIC (NCC, BCC)

# BTS Master™ MT8220T Base Station Analyzer Features

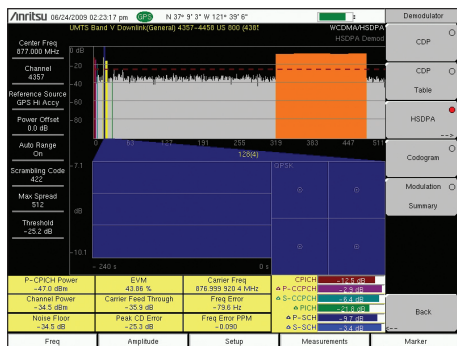


## W-CDMA/HSPA+ Measurements (Option 0881)



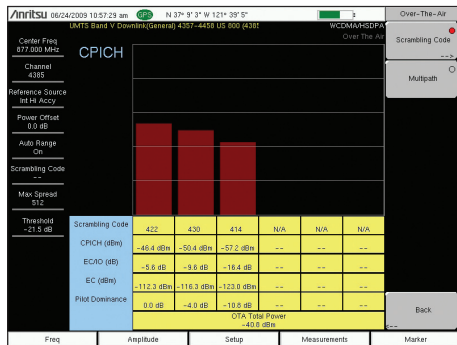
### RF Measurements – Spectral Emissions Mask

The 3GPP spectral emission mask is displayed. Failing this test leads to interference with neighboring carriers, legal liability, and low signal quality.



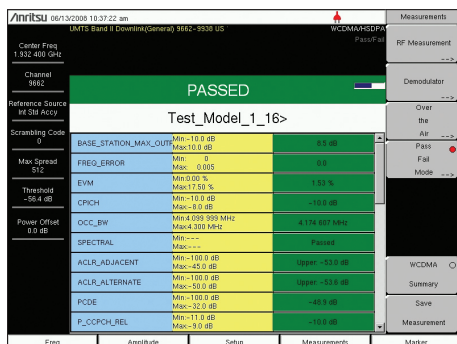
### Demodulation – Error Vector Magnitude (EVM)

This is the single most important signal quality measurement. Poor EVM leads to dropped calls, low data rate, low sector capacity, and blocked calls.



### Over-the-Air Measurements – Scrambling Codes

Too many strong sectors at the same location creates pilot pollution. This leads to low data rate, low capacity, and excessive soft handoffs.



### Pass/Fail Test

Set up common test limits, or sets of limits, for each instrument. Inconsistent settings between base stations lead to inconsistent network behavior.

## W-CDMA/HSPA+ Measurements

The BTS Master features three W-CDMA/HSPA+ measurement modes:

- RF Measurements
- Demodulation
- Over-the-Air Measurements (OTA)

The goal of these measurements is to increase data rate and capacity by accurate power settings, ensuring low out-of-channel emissions, and good signal quality. These attributes help to create a low dropped call rate, a low blocked call rate, and a good customer experience. Cell site technicians or RF engineers can make measurements Over-the-Air (OTA) to spot-check a transmitter's coverage and signal quality without taking the Node B off-line. When the OTA test results are ambiguous, one can directly connect to the base station to check the signal quality and transmitter power.

### Frequency Error

Frequency Error is a check to see that the carrier frequency is precisely set. The BTS Master can accurately measure Carrier Frequency Error OTA if the instrument is GPS enabled or in GPS holdover. Calls will drop when mobiles travel at higher speed. In some cases, cell phones cannot hand off into, or out of the cell.

### Peak Code Domain Error (PCDE)

Peak Code Domain Error is a measure of the errors between one code channel and another. High PCDE causes dropped calls, low signal quality, low data rate, low sector capacity, and blocked calls.

### Multipath

Multipath measurements show how many, how long, and how strong the various radio signal paths are. Multipath signals outside tolerances set by the cell phone or other UE devices become interference. The primary issue is co-channel interference leading to dropped calls and low data rates.

### Pass/Fail Mode

The BTS Master stores the five test models covering all eleven test scenarios specified in the 3GPP specification (TS 25.141) for testing base station performance and recalls these models for quick easy measurements.

## RF Measurements

- Band Spectrum
- Channel Spectrum
- Channel Power
- Occupied Bandwidth
- Peak-to-Average Power
- Spectral Emission Mask
- Spectral Emission Summary
- Single carrier ACLR
- Multi-carrier ACLR

## Demodulation

- Code Domain Power Graph
- P-CPICH Power
- Channel Power
- Noise Floor
- EVM
- Carrier Feed Through
- Peak Code Domain Error
- Carrier Frequency
- Frequency Error
- Control Channel Power
- Abs/Rel/Delta Power
- CPICH, P-CCPCH
- S-CCPCH, PICH
- P-SCH, S-SCH
- HSPA+
- Power vs. Time
- Constellation
- Code Domain Power Table
- Code, Status
- EVM, Modulation Type
- Power, Code Utilization
- Power Amplifier Capacity
- Codogram

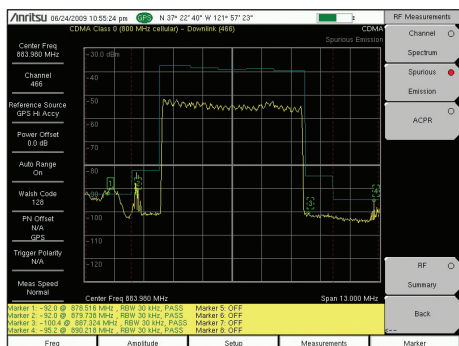
## Over-the-Air (OTA) Measurements

- Scrambling Code Scanner (Six)
- Scrambling Codes
- CPICH
- $E_c/I_o$
- $E_c$
- Pilot Dominance
- OTA Total Power
- Multipath Scanner (Six)
- Six Multipaths
- Tau
- Distance
- RSCP
- Relative Power
- Multipath Power

# BTS Master™ MT8220T Base Station Analyzer Features



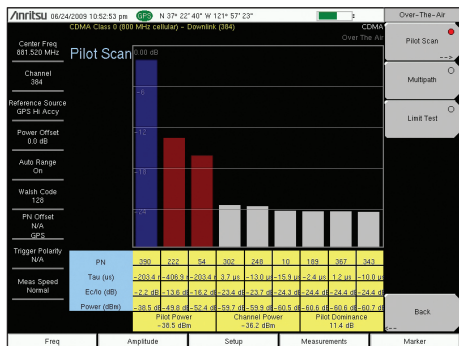
## TD-SCDMA/HSPA+ Measurements (Option 0882)



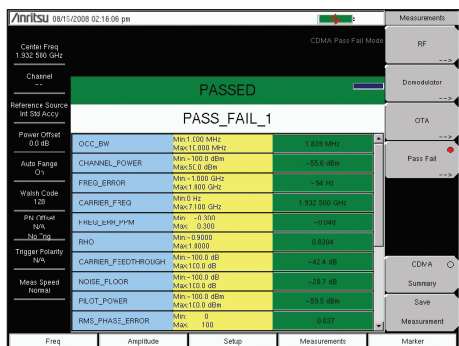
**RF Measurements – Spectral Emissions Mask**  
The 3GPP spectral emission mask is displayed. Failing this test leads to interference with neighboring carriers, legal liability, and low signal quality.



**Modulation Quality – EVM**  
High or low values will create larger areas of cell-to-cell interference and create lower data rates near cell edges. Low values affect in-building coverage.



**Over-the-Air Measurements – Sync Signal Power**  
Check for uneven amplitude of sub-carriers. Data will be less reliable on weak sub-carriers, creating a lower overall data rate.



**Pass/Fail Test**  
Set up common test limits, or sets of limits, for each instrument. Inconsistent settings between base stations lead to inconsistent network behavior.

### TD-SCDMA/HSPA+ Measurements

The BTS Master features three TD-SCDMA/HSPA+ measurement modes:

- RF Measurements
- Demodulation
- Over-the Air Measurements (OTA)

The goal of these measurements is to increase data rate and capacity by accurate power settings, ensuring low out-of-channel emissions, and good signal quality. These attributes help to create a low dropped call rate, a low blocked call rate, and a good customer experience.

Cell site technicians or RF engineers can make measurements Over-the-Air (OTA) to spot-check a transmitter's coverage and signal quality without taking the cell site off-line. When the OTA test results are ambiguous, one can directly connect to the base station to check the signal quality and transmitter power.

Error Vector Magnitude (EVM) is the ratio of errors, or distortions, in the actual signal, compared to a perfect signal. EVM faults will result in poor signal quality to all user equipment. In turn, this will result in extended hand off time, lower sector capacity, and lower data rates, increasing dropped and blocked calls.

### Peak Code Domain Error (Peak CDE)

Peak CDE is the EVM of the worst code. Code Domain displays show the traffic in a specific time slot. Peak CDE faults will result in poor signal quality to all user equipment. In turn, this will result in extended hand off time, lower sector capacity, and lower data rates.

### OTA Tau Scanner $E_c/I_o$

$E_c/I_o$  faults indicate excessive or inadequate coverage and lead to low capacity, low data rates, extended handoffs, and excessive call drops.

### DwPTS OTA Power Mapping

DwPTS OTA Power when added to  $E_c/I_o$  gives the absolute sync code power which is often proportional to PCCPCH (pilot) power. Use this to check and plot coverage with GPS. Coverage plots can be downloaded to PC based mapping programs for later analysis. Poor readings will lead to low capacity, low data rates, excessive call drops and call blocking.

### RF Measurements

- Channel Spectrum
  - Channel Power
  - Occupied Bandwidth
  - Left Channel Power
  - Left Channel Occ B/W
  - Right Channel Power
  - Right Channel Occ B/W
- Power vs. Time
  - Six Slot Powers
  - Channel Power (RRC)
  - DL-UL Delta Power
  - UpPTS Power
  - DwPTS Power
  - On/Off Ratio
  - Slot Peak-to-Average Power
- Spectral Emission
- RF Summary

### Demodulation

- Code Domain Power/Error
  - (QPSK/8 PSK/16 QAM/64 QAM)
  - Slot Power
  - DwPTS Power
  - Noise Floor
  - Frequency Error
  - Tau
  - Scrambling Code
  - EVM
  - Peak EVM
  - Peak Code Domain Error
  - CDP Marker
- Modulation Summary

### Over-the-Air (OTA) Measurements

- Code Scan (32)
  - Scrambling Code Group
  - Tau
  - $E_c/I_o$
  - DwPTS Power
  - Pilot Dominance
- Tau Scan (Six)
  - Sync-DL#
  - Tau
  - $E_c/I_o$
  - DwPTS Power
  - Pilot Dominance

- Record
- Run/Hold

### Pass/Fail (User Editable)

- Pass Fail All
- Pass/Fail RF
- Pass Fail Demod
- Measurements
  - Occupied Bandwidth
  - Channel Power
  - Channel Power RCC
  - On/Off Ratio
  - Peak-to-Average Ratio
  - Frequency Error
  - EVM
  - Peak EVM
  - Peak Code Domain Error
  - Tau
  - Carrier Feedthrough
  - Noise Floor

# BTS Master™ MT8220T Base Station Analyzer Features

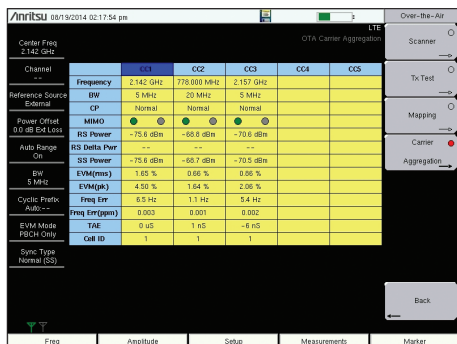


## LTE/LTE-A FDD/TDD Measurements (Option 0883)



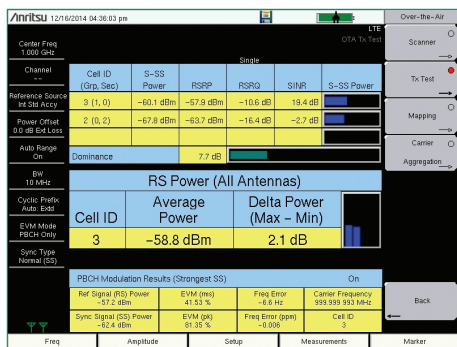
### Modulation Quality - Power vs. Resource Block

A high utilization of the Resource Blocks would indicate a cell site in nearing overload and it may be appropriate to start planning for additional capacity.



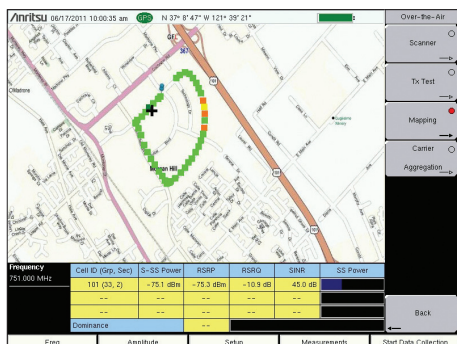
### Over-the-Air LTE-A Carrier Aggregation

Convenient LTE-A Carrier Aggregation measurement shows key performance parameters of each component carrier on one screen with minimal user setup improving maintenance efficiency.



### Over-the-Air Measurements - Tx Test

By looking at the reference signals of MIMO antennas one can determine if MIMO is working properly. If the delta power is too large, there is an issue.



### Over-the-Air On-screen Mapping

Import map area on instrument screen to drive test downlink coverage of S-SS Power, RSRP, RSRQ, or SINR.

## LTE/LTE-A FDD/TDD Signal Measurements

The BTS Master features three LTE measurement modes:

- RF Measurements
- Modulation Measurements
- Over-the-Air Measurements (OTA)

The goal of these measurements is to increase data rate and capacity by accurate power settings, ensuring low out-of-channel emissions, and good signal quality. These attributes help to create a low dropped call rate, a low blocked call rate, and a good customer experience.

Cell site technicians or RF engineers can make measurements Over-the-Air (OTA) to spot-check a transmitter's coverage and signal quality without taking the cell site off-line. When the OTA test results are ambiguous, one can directly connect to the base station to check the signal quality and transmitter power.

### Adjacent Channel Leakage Ratio (ACLR)

Adjacent Channel Leakage Ratio (ACLR) measures how much BTS signal gets into neighboring RF channels. ACLR checks the closest (adjacent) and the second closest (alternate) channels. Poor ACLR can lead to interference with adjacent carriers and legal liability. It also can indicate poor signal quality which leads to low throughput.

### Cell ID (Sector ID, Group ID)

Cell ID indicates which base station is being measured OTA. The strongest base station at your current location is selected for measurement. Wrong values for Cell ID lead to inability to register. If the cause is excessive overlapping coverage, it also will lead to poor EVM and low data rates.

### Pass/Fail Test

Set up common test limits, or sets of limits, for each instrument. Inconsistent settings between base stations leads to inconsistent network behavior.

### EVM

High values will create larger areas of cell-to-cell interference and create lower data rates near cell edges.

### Mapping

On-screen mapping allows field technicians to quickly determine the downlink coverage quality in a given geographic location. Plot S-SS Power, RSRP, RSRQ or SINR with five user definable thresholds. All parameters are collected for the three strongest signals and can be saved as \*.kml and \*.mtd (tab delimited) for importing to third party mapping programs for further analysis.

## RF Measurements

- Channel Spectrum
- Channel Power
- Occupied Bandwidth
- Power vs. Time (TDD only)
- Frame View
- Sub-Frame View
- Total Frame Power
- DwPTS Power
- Transmit Off Power
- Cell ID
- Timing Error

## ACLR

- Spectral Emission Mask
- Category A or B (Opt 1)

## RF Summary

### Modulation Measurements

- Power vs. Resource Block (RB)
- RB Power (PDSCH)
- Active RBs, Utilization %
- Channel Power, Cell ID
- OSTP, Frame EVM by modulation
- Constellation
- QPSK, 16 QAM, 64 QAM
- Modulation Results

- Ref Signal Power (RS)
- Sync Signal Power (SS)
- EVM - rms, peak, max hold
- Frequency Error - Hz, ppm
- Carrier Frequency
- Cell ID

### Control Channel Power

- Bar Graph or Table View
- RS, P-SS, S-SS
- PBCH, PCFICH
- PHICH, PDCCH
- Total Power (Table View)
- EVM

### Tx Time Alignment

- Modulation Summary
- Includes EVM by modulation
- Antenna Icons
- Detects active antennas (1 or 2)

### Over-the-Air Measurements (OTA)

- Scanner - six strongest signals
- Cell ID (Group, Sector)
- S-SS, RSRP, RSRQ, SINR
- Dominance
- Modulation Results - On/Off
- Auto Save - On/Off

### Tx Test

- Scanner - three strongest signals
- RS Power of MIMO antennas
- Cell ID, Average Power
- Delta Power (Max-Min)
- Graph of Antenna Power
- Modulation Results - On/Off

### Mapping

- On-screen
- S-SS, RSRP, RSRQ, or SINR

### Carrier Aggregation

- Up to 5 component carriers (CC1 to CC5)
- CP, MIMO status, RS & SS Power, EVM, Frequency Error, Time Alignment Error, Cell ID

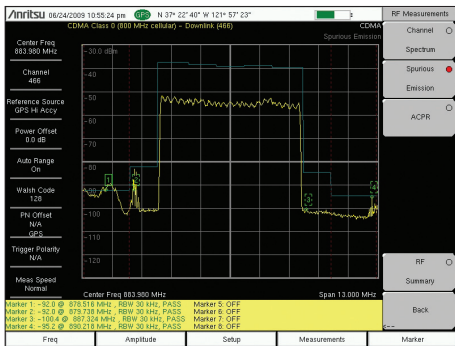
### Pass/Fail (User Editable)

- View Pass/Fail Limits
- All, RF, Modulation
- Available Measurements
- Channel Power
- Occupied Bandwidth
- ACLR
- Frequency Error
- Carrier Frequency
- Dominance
- EVM peak, rms
- Frame EVM, rms
- Frame EVM by mod type
- RS, SS Power
- RS EVM
- P-SS, S-SS Power, EVM
- PBCH, PCFICH, PHICH, PDCCH Power, EVM
- Cell, Group, Sector ID
- OSTP
- Tx Time Alignment
- Frame Power (TDD)
- DwPTS Power (TDD)
- Transmit Off Power (TDD)
- Timing Error (TDD)

# BTS Master™ MT8220T Base Station Analyzer Features

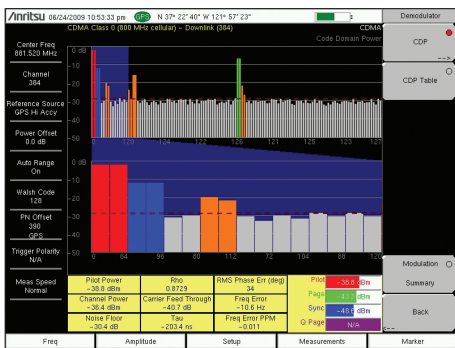


## CDMA/EV-DO Measurements (Option 0884)



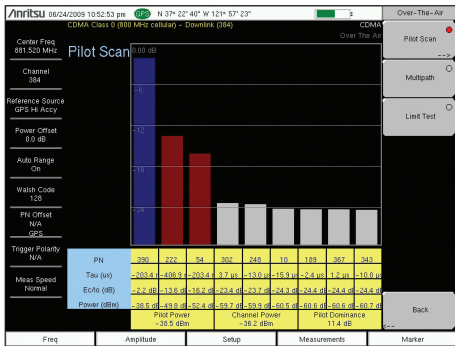
### RF Measurements - Spectral Emissions Mask

The 3GPP2 spectral emission mask is displayed. Failing this test leads to interference with neighboring carriers, legal liability, and low signal quality.



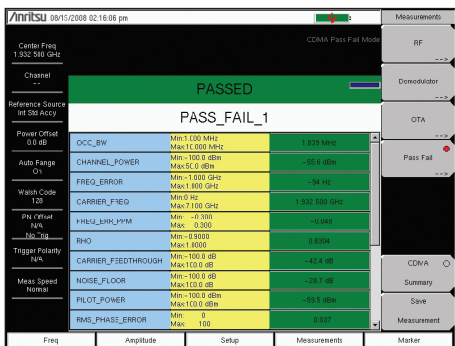
### Modulation Quality - EVM

High or low values will create larger areas of cell-to-cell interference and create lower data rates near cell edges. Low values affect in-building coverage.



### Over-the-Air Measurements - Sync Signal Power

Check for uneven amplitude of sub-carriers. Data will be less reliable on weak sub-carriers, creating a lower overall data rate.



### Pass/Fail Test

Set up common test limits, or sets of limits, for each instrument. Inconsistent settings between base stations lead to inconsistent network behavior.

## CDMA Measurements

The BTS Master features three CDMA measurement modes:

- RF Measurements
- Demodulation
- Over-the Air Measurements (OTA)

The goal of these measurements is to increase data rate and capacity by accurate power settings, ensuring low out-of-channel emissions, and good signal quality. These attributes help to create a low dropped call rate, a low blocked call rate, and a good customer experience.

Cell site technicians or RF engineers can make measurements Over-the-Air (OTA) to spot-check a transmitter's coverage and signal quality without taking the cell site off-line. When the OTA test results are ambiguous, one can directly connect to the base station to check the signal quality and transmitter power.

## Adjacent Channel Power Ratio (ACPR)

ACPR measures how much of the carrier gets into neighboring RF channels. ACPR, and multi-channel ACPR, check the closest (adjacent) and second closest (alternate) RF channels for single and multicarrier signals. High ACPR will create interference for neighboring carriers. This is also an indication of low signal quality and low capacity, which can lead to blocked calls.

## RMS Phase Error

RMS Phase Error is a measure of signal distortion caused by frequency instability. Any changes in the reference frequency or the radio's internal local oscillators will cause problems with phase error. A high reading will cause dropped calls, low signal quality, low data rate, low sector capacity, and blocked calls.

## Noise Floor

Noise Floor is the average level of the visible code domain noise floor. This will affect Rho. A high noise floor will result in dropped calls, low signal quality, low data rate, low sector capacity, and blocked calls.

## Ec/I0

Ec/I0 indicates the quality of the signal from each PN. Low Ec/I0 leads to low data rate and low capacity.

## RF Measurements

- Channel Spectrum
- Channel Power
- Occupied Bandwidth
- Peak-to-Average Power
- Spectral Emission Mask
- Multi-carrier ACPR
- Rf Summary

## Demodulation

- Code Domain Power Graph
- Pilot Power
- Channel Power
- Noise Floor
- Rho
- Carrier Feed Through
- Tau
- RMS Phase Error
- Frequency Error
- Abs/Rel/ Power
- Pilot
- Page
- Sync
- Q Page

## Code Domain Power Table

- Code
- Status
- Power
- Multiple Codes
- Code Utilization
- Modulation Summary

## Over-the-Air (OTA) Measurements

- Pilot Scanner (Nine)
  - PN
  - Ec/I0
  - Tau
  - Pilot Power
  - Channel Power
  - Pilot Dominance
- Multipath Scanner (Six)
  - Ec/I0
  - Tau
  - Channel Power
  - Multipath Power
- Limit Test - 10 Tests Averaged
  - Rho
  - Adjusted Rho
  - Multipath
  - Pilot Dominance
  - Pilot Power
  - Pass/Fail Status

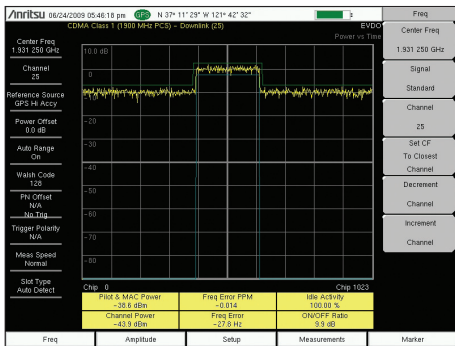
## Pass/Fail (User Editable) Measurements

- Channel Power
- Occupied Bandwidth
- Peak-to-Average Power
- Spectral Mask Test
- Frequency Error
- Channel Frequency
- Pilot Power
- Noise Floor
- Rho
- Carrier Feed Through
- Tau
- RMS Phase Error
- Code Utilization
- Measured PN
- Pilot Dominance
- Multipath Power

# BTS Master™ MT8220T Base Station Analyzer Features

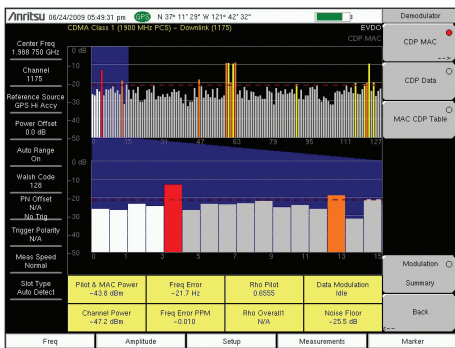


## CDMA/EV-DO Measurements (Option 0884) (continued)



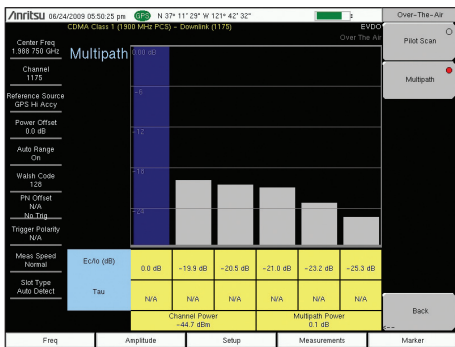
### RF Measurements - Pilot and MAC Power

High values will create pilot pollution. High or low values will cause dead spots/dropped calls and cell loading imbalances/blocked calls.



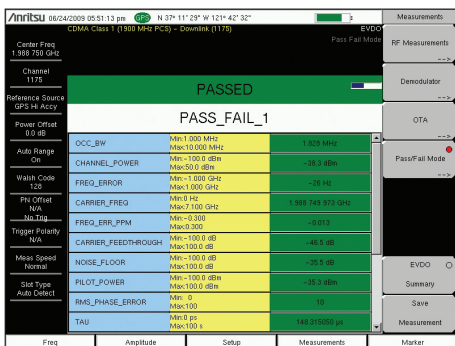
### Demodulation - Frequency Error

Calls will drop when mobiles travel at higher speed. In some cases, cell phones cannot hand off into, or out of the cell, creating island cells.



### Over-the-Air Measurements - Multipath

Too much Multipath from the selected PN Code is the primary issue of co-channel interference leading to dropped calls and low data rates.



### Pass/Fail Test

Set up common test limits, or sets of limits, for each instrument. Inconsistent settings between base stations lead to inconsistent network behavior.

## EV-DO Measurements

The BTS Master features three EV-DO measurement modes:

- RF Measurements
- Demodulation
- Over-the Air Measurements (OTA)

The goal of these measurements is to increase data rate and capacity by accurate power settings, ensuring low out-of-channel emissions, and good signal quality. These attributes help to create a low dropped call rate, a low blocked call rate, and a good customer experience. Cell site technicians or RF engineers can make measurements Over-the-Air (OTA) to spot-check a transmitter's coverage and signal quality without taking the cell site off-line. When the OTA test results are ambiguous, one can directly connect to the base station to check the signal quality and transmitter power.

### Spectral Emission Mask (SEM)

SEM is a way to check out-of-channel spurious emissions near the carrier. These spurious emissions both indicate distortion in the signal and can create interference with carriers in the adjacent channels. Faults leads to interference and thus, lower data rates for adjacent carriers. Faults also may lead to legal liability and low in-channel signal quality.

### Rho

Rho is a measure of modulation quality. Rho Pilot, Rho Mac, and Rho Data are the primary signal quality tests for EV-DO base stations. Low Rho results in dropped calls, low signal quality, low data rate, low sector capacity, and blocked calls. This is the single most important signal quality measurement.

### PN Codes

PN Code overlap is checked by the pilot scanner. Too many strong pilots create pilot pollution which results in low data rate, low capacity, and excessive soft handoffs.

### Over-the-Air (OTA) Pilot Power

OTA Pilot Power indicates signal strength. Low OTA Pilot Power causes dropped calls, low data rate, and low capacity.

## RF Measurements

- Channel Spectrum
- Channel Power
- Occupied Bandwidth
- Peak-to-Average Power
- Power vs. Time
- Pilot & MAC Power
- Channel Power
- Frequency Error
- Idle Activity
- On/Off Ratio
- Spectral Emission Mask
- Multi-carrier ACPR
- RF Summary

## Demodulation

- MAC Code Domain Power Graph
- Pilot & MAC Power
- Channel Power
- Frequency Error
- Rho Pilot
- Rho Overall
- Data Modulation
- Noise Floor
- MAC Code Domain Power Table
- Code
- Status
- Power
- Code Utilization

- Data Code Domain Power
- Active Data Power
- Data Modulation
- Rho Pilot
- Rho Overall
- Maximum Data CDP
- Minimum Data CDP
- Modulation Summary

## Over-the-Air (OTA) Measurements

- Pilot Scanner (Nine)
- PN
- $E_c/I_0$
- Tau
- Pilot Power
- Channel Power
- Pilot Dominance
- Multipath Scanner (Six)
- $E_c/I_0$
- Tau
- Channel Power
- Multipath Power

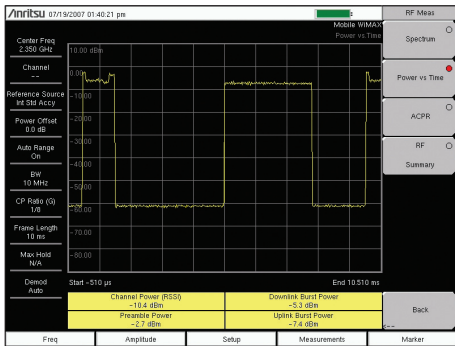
## Pass/Fail (User Editable) Measurements

- Channel Power
- Occupied Bandwidth
- Peak-to-Average Power
- Carrier Frequency
- Frequency Error
- Spectral Mask
- Noise Floor
- Pilot Floor
- RMS Phase Error
- Tau
- Code Utilization
- Measured PN
- Pilot Dominance
- Multipath Power

# BTS Master™ MT8220T Base Station Analyzer Features

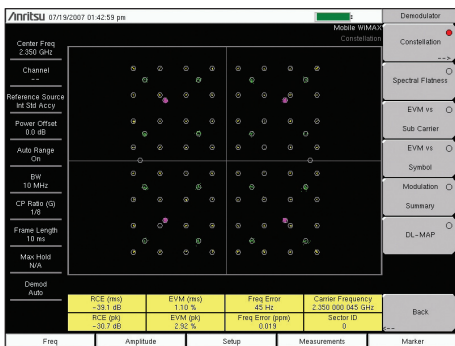


## WiMAX Fixed/Mobile Measurements (Option 0885)



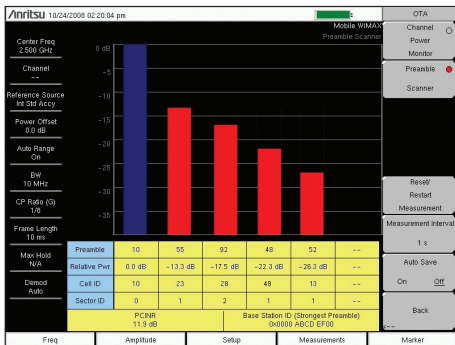
### RF Measurement – Preamble Power

High or low values will create larger areas of cell-to-cell interference and create lower data rates near cell edges. Low values affect in-building coverage.



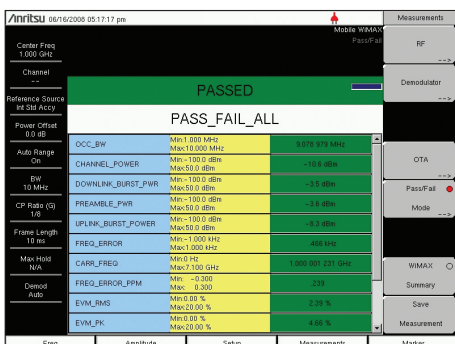
### Demodulation – Frequency Error

Calls will drop when user's equipment travels at high speed. In severe cases, handoffs will not be possible at any speed, creating island cells.



### Over-the-Air Measurements – PCINR

A low Physical Carrier to Interference plus Noise Ratio (PCINR) indicates poor signal quality, low data rate and reduced sector capacity.



### Pass/Fail Test

Set up common test limits, or sets of limits, for each instrument. Inconsistent settings between base stations lead to inconsistent network behavior.

## WiMAX Fixed/Mobile Measurements

The BTS Master features two Fixed WiMAX and three Mobile WiMAX measurement modes:

- RF Measurements
- Demodulation (up to 10 MHz)
- Over-the-Air Measurements (OTA) (Mobile only)

The goal of these measurements is to increase data rate and capacity by accurate power settings, ensuring low out-of-channel emissions, and good signal quality. These attributes help to create a low dropped call rate, a low blocked call rate, and a good customer experience. Cell site technicians or RF engineers can make measurements Over-the-Air (OTA) to spot-check a transmitter's coverage and signal quality without taking the cell site off-line. When the OTA test results are ambiguous, one can directly connect to the base station to check the signal quality and transmitter power.

### Cell ID, Sector ID, and Preamble (Mobile WiMAX)

Cell ID, Sector ID, and Preamble show which cell, sector, and segment are being measured OTA. The strongest signal is selected automatically for the additional PCINR and Base Station ID measurement. Wrong values for cell, sector and segment ID lead to dropped handoffs and island cells. If the cause is excessive coverage, it also will lead to large areas of low data rates.

### Error Vector Magnitude (EVM) Relative Constellation Error (RCE)

RCE and EVM measure the difference between the actual and ideal signal. RCE is measured in dB and EVM in percent. A known modulation is required to make these measurements. High RCE and EVM cause low signal quality, low data rate, and low sector capacity. This is the single most important signal quality measurement.

### Preamble Mapping (Mobile WiMAX)

Preamble Scanner can be used with the GPS to save scan results for later display on a map. PCINR ratio can be used for the strongest WiMAX preamble available at that spot. The Base Station ID and Sector ID information are also included so that it's easier to interpret the results. Once PCINR data is mapped, it becomes much easier to understand and troubleshoot any interference or coverage issues.

## RF Measurements

- Channel Spectrum
- Channel Power
- Occupied Bandwidth
- Power vs. Time
- Channel Power
- Preamble Power
- Downlink Burst Power (Mobile only)
- Uplink Burst Power (Mobile only)
- Data Burst Power (Fixed only)
- Crest Factor (Fixed only)

## ACPR

### RF Summary Demodulation (10 MHz maximum)

#### Constellation

- RCE (RMS/Peak)
- EVM (RMS/Peak)
- Frequency Error
- Carrier Frequency
- CINR (Mobile only)
- Base Station ID
- Sector ID (Mobile Only)
- Spectral Flatness
- Adjacent Subcarrier Flatness

#### EVM vs. Subcarrier/Symbol

- RCE (RMS/Peak)
- EVM (RMS/Peak)
- Frequency Error
- CINR (Mobile only)
- Base Station ID
- Sector ID (Mobile only)
- DL-MAP (Tree View) (Mobile only)

#### Modulation Summary Over-the-Air (OTA) (Mobile)

- Channel Power Monitor
- Preamble Scanner (Six)
- Preamble
- Relative Power
- Cell ID
- Sector ID
- PCINR
- Dominant Preamble
- Base Station ID
- Auto-Save with GPS Tagging and Logging

#### Pass/Fail (User Editable)

- Pass/Fail All
- Pass/Fail RF
- Pass/Fail Demod
- Measurements

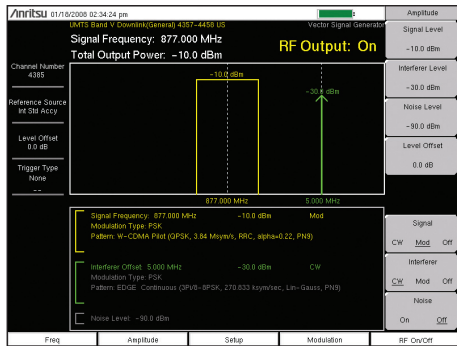
- Channel Power
- Occupied Bandwidth
- Downlink Burst Power
- Uplink Burst Power
- Preamble Power
- Crest Factor
- Frequency Error
- Carrier Frequency
- EVM
- RCE
- Sector ID (Mobile)



# BTS Master™ MT8220T Base Station Analyzer Features

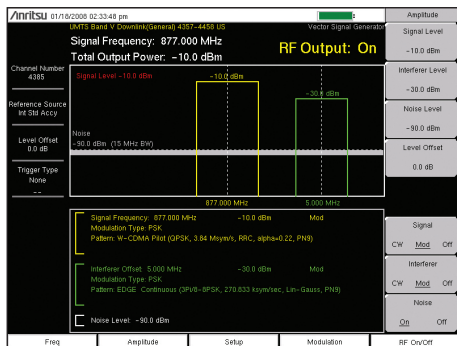


## Vector Signal Generator Option (Option 0023)



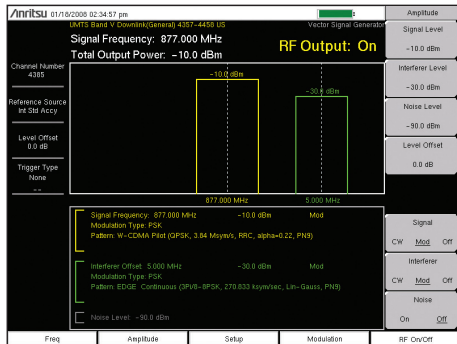
### Sensitivity Test Set-up

Wanted Signal: Modulated  
Interferer: CW  
AWGN: Off



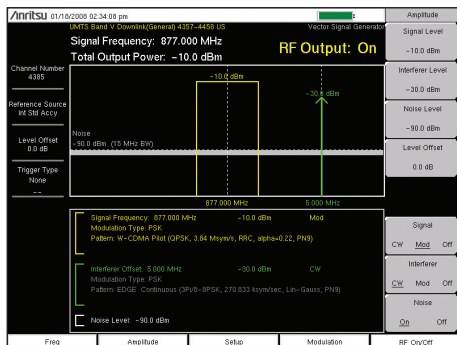
### Adjacent Channel Selectivity Test Set-up

Wanted Signal: Modulated  
Interferer: Modulated  
AWGN: On



### Blocking Test Set-up

Wanted Signal: Modulated  
Interference: Modulated  
AWGN: Off



### Intermodulation Rejection Test Set-up

Wanted Signal: Modulated  
Interferer: CW  
AWGN: On

## Vector Signal Generator (VSG)

The BTS Master's Vector Signal Generator is designed to be a signal source to facilitate base station field testing of the receiver's basic performance when it comes to:

- Sensitivity
- Adjacent Channel Selectivity
- Blocking
- Intermodulation Rejection

The BTS Master has the flexibility to generate three signals in a variety of combinations:

- Modulated, CW, AWGN (Additive White Gaussian Noise)
- Wanted Signals (modulated or CW)
  - One signal at 10 MHz or less (with no interferer present)
  - One signal at 5 MHz or less (with interferer present)
  - With or without AWGN
- Interferer (modulated or CW)
  - One interferer at 5 MHz or less
  - With or without AWGN

The BTS Master has the ability to output complex waveforms. As an example, you generate a W-CDMA signal and a GSM complex waveforms including:

- LTE, TD-LTE
- W-CDMA, HSPA+
- TD-SCDMA, TD-HSPA+
- GSM, GPRS, EDGE
- CDMA2000 1X, 1x EV-DO
- Fixed WiMAX, Mobile WiMAX
- AM, FM
- QPSK, QAM

The BTS Master VSG has an output power range to meet most testing requirements from -124 dBm to 0 dBm.

Users can define their patterns in either MATLAB® or ASCII. Master Software Tools Pattern Converter can upload them into the BTS Master.

## Set-up Parameters

Frequency  
Amplitude  
Trigger (for modulated signals)  
Pattern Manager  
Modulation  
Modulation Edit  
RF (On/Off)

## Standard Signal Patterns

AM  
FM  
Pulsed CW  
EDGE – Continuous  
W-CDMA Pilot  
DECT 16 QAM – Continuous  
DECT 64 QAM – Continuous  
DVB-C  
J.83C Digital Cable  
64 QAM – US Digital Cable

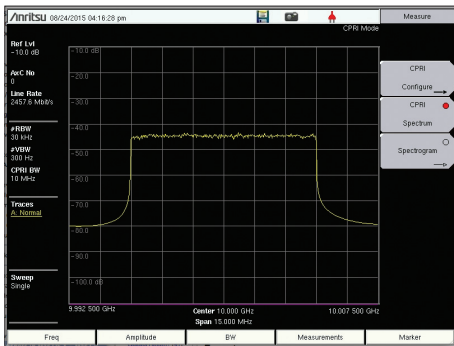
## User-defined Signal Patterns

(Sampling Rate, Bandwidth)  
12.500 MHz, 10 MHz  
6.250 MHz, 5.0 MHz  
1.625 MHz, 1.2 MHz

# BTS Master™ MT8220T Base Station Analyzer Features

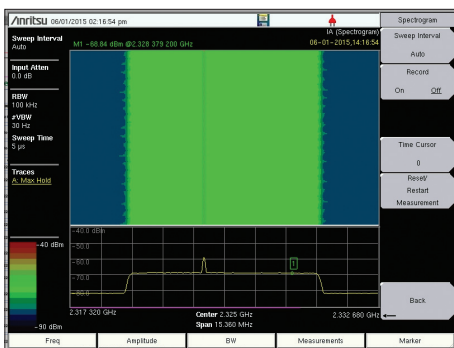


## CPRI RF Measurements (Option 0751)



### CPRI Spectrum

Tapping into the optical CPRI link allows the user to monitor either uplink or downlink spectrums



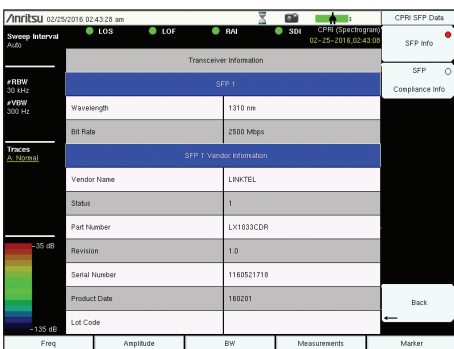
### CPRI Spectrogram

Identifies transient or intermittent interference signals on the uplink over time



### Layer 2 Alarms

Verify CPRI transport layer



### SFP Data

Easily Determine the type of SFP is installed in the MT8220T

### CPRI RF Measurements

The CPRI RF measurement option allows the user to make RF based measurements over a fiber optic CPRI link (fiber connection between the BBU & RRU).

Measurements include:

- CPRI spectrum
- CPRI spectrogram
- Layer 2 Alarms
- SFP Data

### Uplink Interference

One of the biggest issues facing operators is interference on the uplink which can drastically affect KPIs. By tapping into the CPRI fiber link, the uplink spectrum can be monitored.

The ultra-fast sweep speed of the CPRI RF measurements makes it easy to capture and analyze transient and bursty signals typical of many types of interference. For added convenience, the user may tune to anywhere within the spectrum and zoom in for more detailed analysis.

### Automatic Configuration

To improve productivity, preconfigured radio setups and an Auto Detect function allow quick and simple configuration of the CPRI RF measurements.

### Layer 2 Alarms

Ability to verify and troubleshoot the CPRI (optical) connection with CPRI Layer 2 Alarms. The key Layer 2 Alarms are always visible at the top of the screen. Optical Power is also available on the Layer 2 Alarm screen.

### SFP Data

Ability to read the embedded SFP data, quickly determine wavelength, supported line rate, manufacturer information and more.

### Measurements

- CPRI Spectrum
- Spectrogram
- Layer 2 Alarms
- SFP Data

# BTS Master™ MT8220T Base Station Analyzer Features



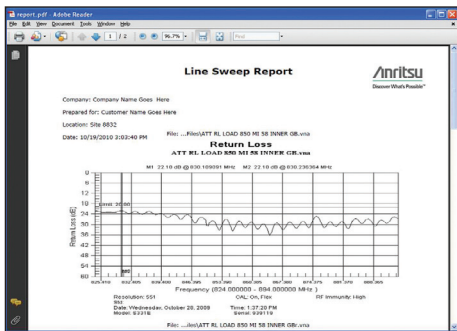
## Line Sweep Tools (for your PC)

## Master Software Tools (for your PC)



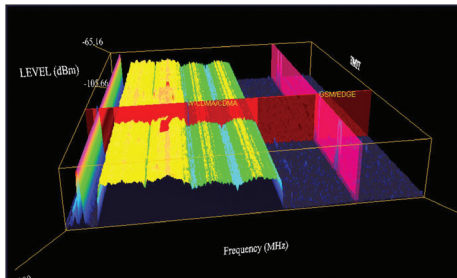
### Trace Validation

Marker and Limit Line presets allow quick checks of traces for limit violations



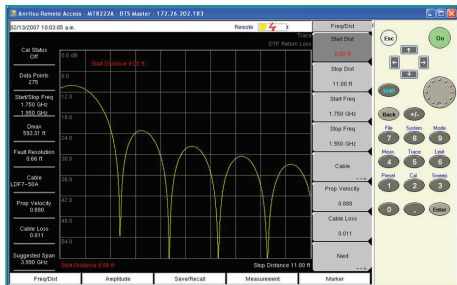
### Report Generation

Create reports with company logo, GPS tagging information, calibration status, and serial number of the instrument for complete reporting.



### 3D Spectrogram

For in-depth analysis with 3-axis rotation viewing, threshold, reference level, and marker control. Turn on Signal ID to see the types of signals.



### Remote Access Tool

The Remote Access Tool allows supervisors to remotely view and control the instrument over the Internet.

## Line Sweep Tools

Line Sweep Tools increases productivity for people who deal with dozens of Cable and Antenna traces, or Passive Intermodulation (PIM) traces, every day.

### User Interface

Line Sweep Tools has a user interface that will be familiar to users of Anritsu's Hand Held Software Tools so the learning curve will be short.

### Marker and Limit Line Presets

Presets make applying markers and a limit line to similar traces, as well as validating traces, a quick task.

### Renaming Grid

A renaming grid makes changing file names, trace titles, and trace subtitles from field values to those required for a report much quicker than manual typing and is less prone to error.

### Report Generator

The report generator will generate a professional looking PDF of all open traces with additional information such as contractor logos and contact information.

## Master Software Tools

Master Software Tools (MST) is a powerful PC software post-processing tool designed to enhance the productivity of technicians in data analysis and testing automation.

### Folder Spectrogram

Folder Spectrogram – creates a composite file of up to 15,000 multiple traces for quick review, also create:

- Peak Power, Total Power, and Peak Frequency plotted over time
- Histogram – filter data and plot number of occurrences over time
- Minimum, Maximum, and Average Power plotted over frequency
- Movie playback – playback data in the familiar frequency domain view
- 3D Spectrogram – for in-depth analysis with 3-axis rotation viewing control

## Script Master™

Script Master is an automation tool which allows the user to embed the operator's test procedure inside the BTS Master for GSM/GPRS/EDGE and W-CDMA/HSPA+ signal analysis applications.

Using Channel Scanner Script Master, the user can create a list of up to 1200 channels and let the BTS Master sequence through the channels 20 at a time, automatically making measurements.

## Remote Control

The BTS Master can be configured for remote control via WiFi to support a variety of testing scenarios. Line of site distances of >100 m (>328 ft) have been achieved allowing a person on the ground to control the test equipment while a person at the top of the mast makes connections.

## Line Sweep Features

### Presets

7 sets of 6 markers and 1 limit line  
Next trace capability

### File Types

Input: HHST DAT, VNA Measurements: Return Loss (VSWR), Cable Loss, DTF-RL, DTF-VSWR, PIM  
Output: LS DAT, VNA, CSV, PNG, BMP, JPG, PDF

### Report Generator

Logo, title, company name, customer name, location, date and time, filename, PDF, HTML, all open traces

### Tools

Cable Editor  
Distance to Fault Measurement Calculator  
Signal Standard Editor  
Renaming Grid

### Interfaces

Ethernet, USB cable, and USB memory stick

### Capture Plots to

Screen, Database, DAT files, JPEG, Instrument

## Master Software Tools Features

### Database Management

Full Trace Retrieval

Trace Catalog

Group Edit

Trace Editor

### Data Analysis

Trace Math and Smoothing

Data Converter

Measurement Calculator

### Mapping

Spectrum Analyzer Mode

Mobile WiMAX OTA

TS-SCDMA OTA

LTE, both FDD and TDD

### Folder Spectrogram

Folder Spectrogram – 2D View

Video Folder Spectrogram – 2D View

Folder Spectrogram – 3D View

### List/Parameter Editors

Traces

Antennas, Cables, Signal Standards

Product Updates

Firmware Upload

Pass/Fail

VSG Pattern Converter

Languages

Mobile WiMAX

Display

### Script Master™

Channel Scanner Mode

GSM/GPRS/EDGE Mode

W-CDMA/HSPA+ Mode

### Connectivity

Ethernet, USB

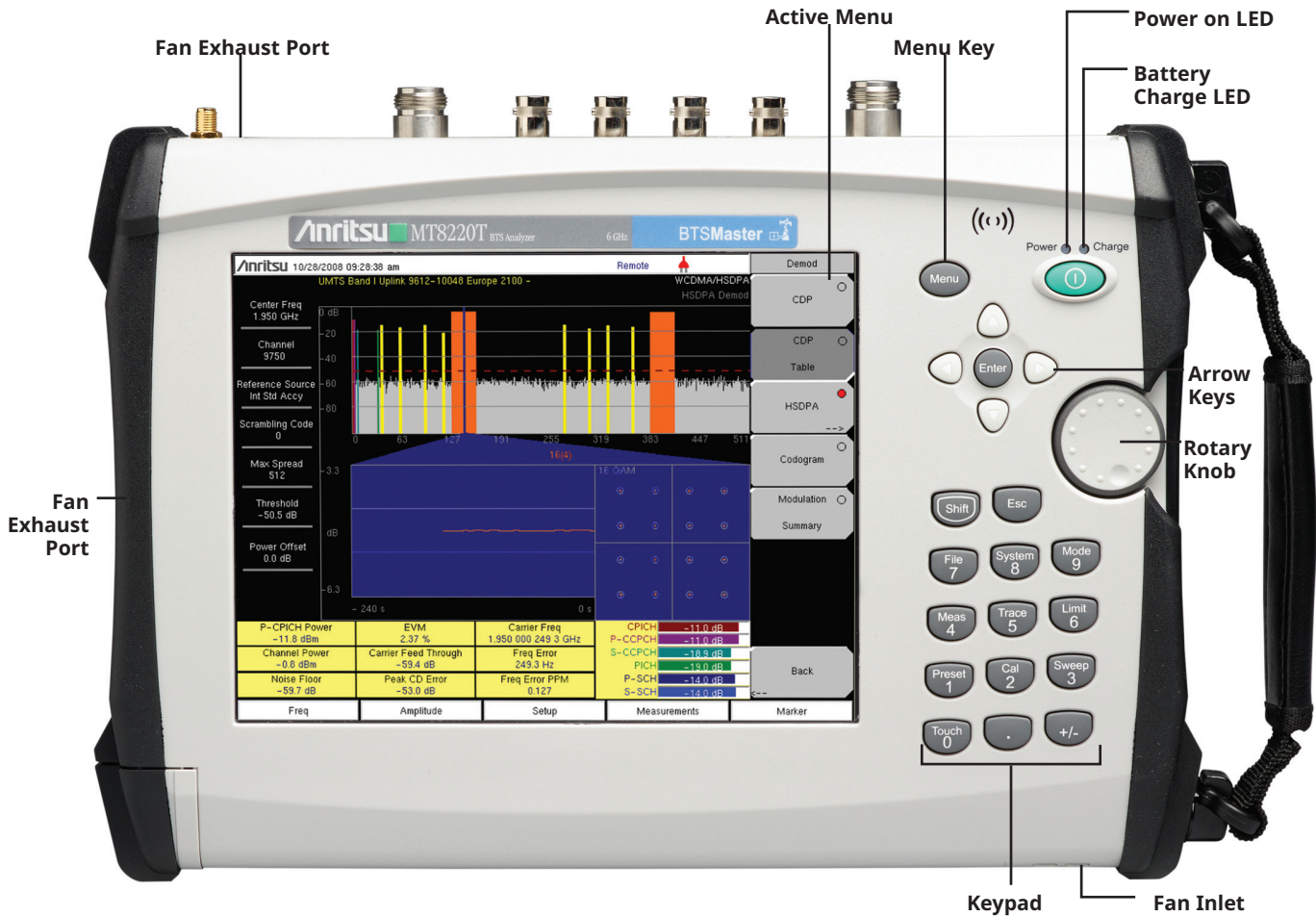
Download measurements and live traces

Upload Lists/Parameters and VSG Patterns

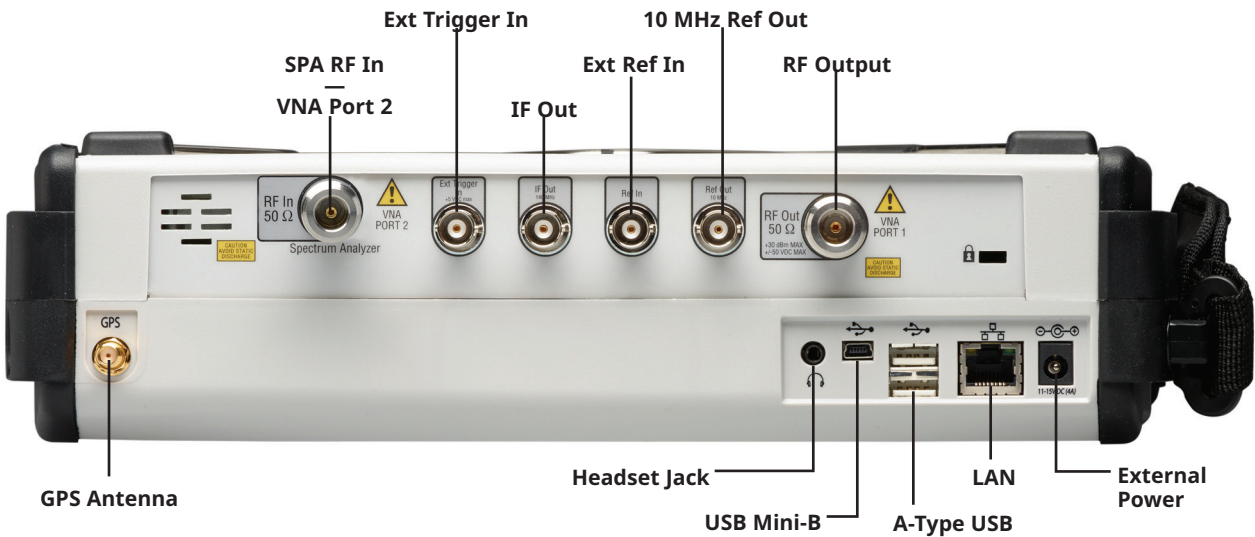
Firmware Updates

Remote Access Tool over the Internet

# BTS Master™ MT8220T Base Station Analyzer Features



Handheld Size: 315 mm x 211 mm x 77 mm (12.4 in x 8.3 in x 3.0 in), Lightweight: 4.6 kg (10.2 lb)



All connectors are conveniently located on the top panel, leaving the sides clear for handheld use

# BTS Master™ MT8220T Ordering Information

## Ordering Information

MT8220T	Description
	400 MHz to 6 GHz Cable and Antenna Analyzer
	150 kHz to 7.1 GHz Spectrum Analyzer
	10 MHz to 7.1 GHz Power Meter
<b>Options</b>	
	MT8220T-0010 Bias-Tee
	MT8220T-0019 High-Accuracy Power Meter (requires external power sensor)
	MT8220T-0025 Interference Analyzer
	MT8220T-0027 Channel Scanner
	MT8220T-0089 Zero-Span IF Output
	MT8220T-0431 Coverage Mapping
	MT8220T-0090 Gated Sweep
	MT8220T-0024 I/Q Waveform Capture
	MT8220T-0023 Vector Signal Generator
	MT8220T-0751 CPRI RF Measurements (2 SFP Ports)
	MT8220T-0880 GSM/GPRS/EDGE Measurements
	MT8220T-0881 W-CDMA/HSPA+ Measurements
	MT8220T-0882 TD-SCDMA/HSPA+ Measurements
	MT8220T-0883 LTE/LTE-A FDD/TDD Measurements
	MT8220T-0884 CDMA/EV-DO Measurements
	MT8220T-0885 WiMAX Fixed/Mobile Measurements
	MT8220T-0098 Standard Calibration to ISO/IEC 17025:2005
	MT8220T-0099 Premium Calibration to ISO/IEC 17025:2005 plus test data

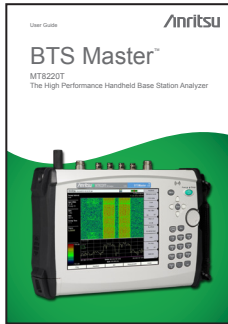
# BTS Master™ MT8220T Ordering Information

## Power Sensors (For complete ordering information see the respective datasheets of each sensor)



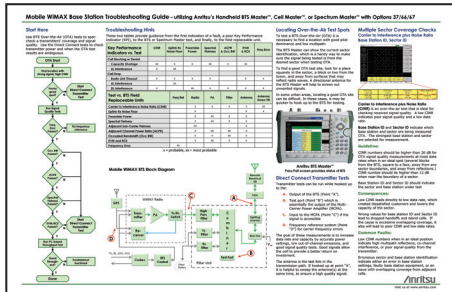
Part Number	Description
PSN50	High Accuracy RF Power Sensor, 50 MHz to 6 GHz, +20 dBm
MA24105A	Inline Peak Power Sensor, 350 MHz to 4 GHz, +51.76 dBm
MA24106A	High Accuracy RF Power Sensor, 50 MHz to 6 GHz, +23 dBm
MA24108A	Microwave USB Power Sensor, 10 MHz to 8 GHz, +20 dBm
MA24118A	Microwave USB Power Sensor, 10 MHz to 18 GHz, +20 dBm
MA24126A	Microwave USB Power Sensor, 10 MHz to 26 GHz, +20 dBm
MA25100A	RF Power Indicator

## Manuals (soft copy included on Handheld Instruments Documentation Disc and at www.anritsu.com)



Part Number	Description
10920-00060	Handheld Instruments Documentation Disc
10580-00366	BTS Master User Guide (Hard copy included)
10580-00230	Cable and Antenna Analyzer Measurement Guide
10580-00349	Spectrum Analyzer Measurement Guide
10580-00240	Power Meter Measurement Guide
10580-00232	Vector Signal Generator Measurement Guide
10580-00234	3GPP Signal Analyzer Measurement Guide
10580-00235	3GPP2 Signal Analyzer Measurement Guide
10580-00236	WiMAX Signal Analyzer Measurement Guide
10580-00367	Programming Manual
10580-00368	Maintenance Manual

## Troubleshooting Guides (soft copy at www.anritsu.com)



Part Number	Description
11410-00473	Cable, Antenna and Components
11410-00551	Spectrum Analyzers
11410-00472	Interference
11410-00566	LTE eNodeB Base Stations
11410-00615	TD-LTE eNodeB Base Stations
11410-00466	GSM/GPRS/EDGE Base Stations
11410-00463	W-CDMA/HSDPA Base Stations
11410-00465	TD-SCDMA/HSDPA Base Stations
11410-00467	cdmaOne/CDMA2000 1X Base Stations
11410-00468	CDMA2000 1xEV-DO Base Stations
11410-00470	Fixed WiMAX Base Stations
11410-00469	Mobile WiMAX Base Stations

## Standard Accessories (included with instrument)



Part Number	Description
10920-00060	Handheld Instruments Documentation Disc
2300-577	Anritsu Software Tool Box for Handheld RF Instruments Disc
2000-1685-R	Soft Carrying Case
2000-1760-R	GPS Antenna, SMA(m), 25 dB gain, 2.5 VDC to 3.7 VDC
2000-1691-R	Stylus with Coiled Tether
633-75	Rechargeable Li-Ion Battery, 7500 mAh
40-187-R	AC/DC Power Supply
806-141-R	Automotive Power Adapter, 12 VDC, 60 Watts
2000-1371-R	Ethernet Cable, 213 cm (7 ft)
3-2000-1498	USB A-mini B Cable, 305 cm (10 ft)
11410-00698	BTS Master MT8220T Technical Data Sheet
	Certificate of Calibration

# BTS Master™ MT8220T Ordering Information

## Optional Accessories

### Calibration Components, 50 Ω



Part Number	Description
OSLN50-1	Precision Open/Short/Load, N(m), 42 dB, 6.0 GHz, 50 Ω
OSLNF50-1	Precision Open/Short/Load, N(f), 42 dB, 6.0 GHz, 50 Ω
2000-1618-R	Precision Open/Short/Load, 7/16 DIN(m), DC to 6.0 GHz 50 Ω
2000-1619-R	Precision Open/Short/Load, 7/16 DIN(f), DC to 6.0 GHz 50 Ω
22N50	Open/Short, N(m), DC to 18 GHz, 50 Ω
22NF50	Open/Short, N(f), DC to 18 GHz, 50 Ω
SM/PL-1	Precision Load, N(m), 42 dB, 6.0 GHz
SM/PLNF-1	Precision Load, N(f), 42 dB, 6.0 GHz

### Calibration Components, 75 Ω



Part Number	Description
22N75	Open/Short, N(m), DC to 3 GHz, 75 Ω
22NF75	Open/Short, N(f), DC to 3 GHz, 75 Ω
26N75A	Precision Termination, N(m), DC to 3 GHz, 75 Ω
26NF75A	Precision Termination, N(f), DC to 3 GHz, 75 Ω
12N50-75B	Matching Pad, DC to 3 GHz, 50 Ω to 75 Ω

### Adapters



Part Number	Description
1091-26-R	SMA(m) to N(m), DC to 18 GHz, 50 Ω
1091-27-R	SMA(f) to N(m), DC to 18 GHz, 50 Ω
1091-80-R	SMA(m) to N(f), DC to 18 GHz, 50 Ω
1091-81-R	SMA(f) to N(f), DC to 18 GHz, 50 Ω
1091-172-R	BNC(f) to N(m), DC to 1.3 GHz, 50 Ω
1091-417-R	N(m) to QMA(f), DC to 6 GHz, 50 Ω
1091-418-R	N(m) to QMA(m), DC to 18 GHz, 50 Ω
510-90-R	7/16 DIN(f) to N(m), DC to 7.5 GHz, 50 Ω
510-91-R	7/16 DIN(f) to N(f), DC to 7.5 GHz, 50 Ω
510-92-R	7/16 DIN(m) to N(m), DC to 7.5 GHz, 50 Ω
510-93-R	7/16 DIN(m) to N(f), DC to 7.5 GHz, 50 Ω
510-96-R	7/16 DIN(m) to 7/16 DIN(m), DC to 7.5 GHz, 50 Ω
510-97-R	7/16 DIN(f) to 7/16 DIN(f), DC to 7.5 GHz, 50 Ω
510-102-R	N(m) to N(m), DC to 11 GHz, 50 Ω, 90 degrees right angle

### Precision Adapters



Part Number	Description
34NN50A	Precision Adapter, N(m) to N(m), DC to 18 GHz, 50 Ω
34NFN50	Precision Adapter, N(f) to N(f), DC to 18 GHz, 50 Ω

### Phase-Stable Test Port Cables, Armored w/ Reinforced Grip (ideal for contractors and other rugged applications)



Part Number	Description
15RNFN50-1.5-R	1.5 m, DC to 6 GHz, N(m) to N(f), 50 Ω
15RDFN50-1.5-R	1.5 m, DC to 6 GHz, N(m) to 7/16 DIN(f), 50 Ω
15RDN50-1.5-R	1.5 m, DC to 6 GHz, N(m) to 7/16 DIN(m), 50 Ω
15RNFN50-3.0-R	3.0 m, DC to 6 GHz, N(m) to N(f), 50 Ω
15RDFN50-3.0-R	3.0 m, DC to 6 GHz, N(m) to 7/16 DIN(f), 50 Ω
15RDN50-3.0-R	3.0 m, DC to 6 GHz, N(m) to 7/16 DIN(m), 50 Ω

## BTS Master™ MT8220T Ordering Information

### Optional Accessories (continued)

**InterChangeable Adaptor Phase Stable Test Port Cables, Armored w/Reinforced Grip** (recommended for cable and antenna line sweep applications. It uses the same ruggedized grip as the Reinforced grip series cables. Now you can also change the adaptor interface on the grip to four different connector types)



Part Number	Description
15RCN50-1.5-R	1.5 m, DC to 6 GHz, N(m), N(f), 7/16 DIN(m), 7/16 DIN(f), 50 Ω
15RCN50-3.0-R	3.0 m, DC to 6 GHz, N(m), N(f), 7/16 DIN(m), 7/16 DIN(f), 50 Ω

**Phase-Stable Test Port Cables, Armored** (ideal for use with tightly spaced connectors and other general use applications)



Part Number	Description
15NNF50-1.5C	1.5 m, DC to 6 GHz, N(m) to N(f), 50 Ω
15NN50-1.5C	1.5 m, DC to 6 GHz, N(m) to N(m), 50 Ω
15NDF50-1.5C	1.5 m, DC to 6 GHz, N(m) to 7/16 DIN(f), 50 Ω
15ND50-1.5C	1.5 m, DC to 6 GHz, N(m) to 7/16 DIN(m), 50 Ω
15NNF50-3.0C	3.0 m, DC to 6 GHz, N(m) to N(f), 50 Ω
15NN50-3.0C	3.0 m, DC to 6 GHz, N(m) to N(m), 50 Ω
15NNF50-5.0C	5.0 m, DC to 6 GHz, N(m) to N(f), 50 Ω
15NN50-5.0C	5.0 m, DC to 6 GHz, N(m) to N(m), 50 Ω

### Miscellaneous Accessories



Part Number	Description
2000-1374	External Dual Charger for Li-Ion Batteries
633-75	Rechargeable Li-Ion Battery, 7500 mAh
2000-1689	EMI Near Field Probe Kit
2000-1797-R	Touchscreen Protective Film, 8.4 in
MA2700A	Handheld InterferenceHunter™ (for full specifications, refer to the MA2700A Technical Data Sheet 11410-00692)
2000-1691-R	Stylus with Coiled Tether
2000-1798-R	Port Extender, DC to 6 GHz, N(m) to N(f)

### Backpack and Transit Case



Part Number	Description
67135	Anritsu Backpack (For Handheld Instrument and PC)
760-243-R	Large Transit Case with Wheels and Handle
760-271-R	Transit Case for Portable Directional Antennas and Port Extender (2000-1777-R, 2000-1778-R, 2000-1779-R, 2000-1798-R)

### GPS Antenna



Part Number	Description
2000-1528-R	GPS Antenna, SMA(m) with 5 m (15 ft) cable, 3 dBi gain, requires 5 VDC
2000-1652-R	GPS Antenna, SMA(m) with 0.3 m (1 ft) cable, 5 dBi gain, requires 3.3 VDC or 5 VDC
2000-1760-R	GPS Antenna, SMA(m), 25 dB gain, 2.5 VDC to 3.7 VDC



# BTS Master™ MT8220T Ordering Information

## Optional Accessories (continued)

### Directional Antennas



Part Number	Description
2000-1411-R	824 MHz to 896 MHz, N(f), 10 dBd, Yagi
2000-1412-R	885 MHz to 975 MHz, N(f), 10 dBd, Yagi
2000-1413-R	1710 MHz to 1880 MHz, N(f), 10 dBd, Yagi
2000-1414-R	1850 MHz to 1990 MHz, N(f), 9.3 dBd, Yagi
2000-1415-R	2400 MHz to 2500 MHz, N(f), 10 dBd, Yagi
2000-1416-R	1920 MHz to 2170 MHz, N(f), 10 dBd, Yagi
2000-1659-R	698 MHz to 787 MHz, N(f), 8 dBd, Yagi
2000-1660-R	1425 MHz to 1535 MHz, N(f), 12.2 dBd, Yagi
2000-1677-R	300 MHz to 3000 MHz, SMA(m), 50 Ω, 3 m cable (9.8 ft), 0 to 6 dBi gain @ 950 MHz, log periodic
2000-1715-R	Directional Antenna, 698 MHz to 2500 MHz, N(f), gain of 2 dBi to 10 dBi, typical
2000-1726-R	Antenna, Yagi 2500 MHz to 2700 MHz N(f), 12 dBd
2000-1747-R	Antenna, Log Periodic, 300 MHz to 5000 MHz N(f), 5.1 dBi, typical
2000-1748-R	Antenna, Log Periodic, 1 to 18 GHz, N(f), 6 dBi, typical
2000-1777-R	Portable Directional Antenna, 9 kHz to 20 MHz, N(f)
2000-1778-R	Portable Directional Antenna, 20 MHz to 200 MHz, N(f)
2000-1779-R	Portable Directional Antenna, 20 MHz to 200 MHz, N(f)

### Portable Antennas



Part Number	Description
2000-1200-R	806 MHz to 866 MHz, SMA(m), 50 Ω
2000-1473-R	870 MHz to 960 MHz, SMA(m), 50 Ω
2000-1035-R	896 MHz to 941 MHz, SMA(m), 50 Ω (1/2 wave)
2000-1030-R	1710 MHz to 1880 MHz, SMA(m), 50 Ω (1/2 wave)
2000-1474-R	1710 MHz to 1880 MHz with knuckle elbow (1/2 wave)
2000-1031-R	1850 MHz to 1990 MHz, SMA(m), 50 Ω (1/2 wave)
2000-1475-R	1920 MHz to 1980 MHz and 2110 to 2170 MHz, SMA(m), 50 Ω
2000-1032-R	2400 MHz to 2500 MHz, SMA(m), 50 Ω (1/2 wave)
2000-1361-R	2400 MHz to 2500, 5000 MHz to 6000 MHz, SMA(m), 50 Ω
2000-1636-R	Antenna Kit (Consists of: 2000-1030-R, 2000-1031-R, 2000-1032-R, 2000-1200-R, 2000-1035-R, 2000-1361-R, and carrying pouch)
2000-1751-R	LTE Dipole, 698-960/1710-2170/2500-2700 MHz, SMA(m), 2 dBi, typical, 50 Ω

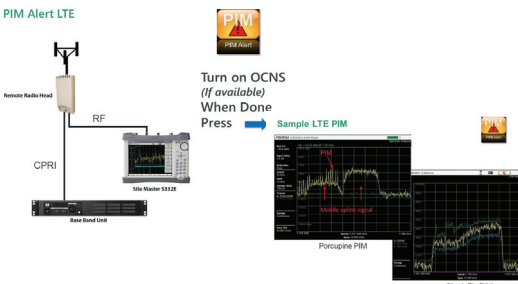
### Mag Mount Broadband Antenna



Part Number	Description
2000-1647-R	Cable 1: 698 MHz to 1200 MHz 2 dBi peak gain, 1700 MHz to 2700 MHz 5 dBi peak gain, N(m), 50 Ω, 3 m (9.8 ft) Cable 2: 3000 MHz to 6000 MHz 5 dBi peak gain, N(m), 50 Ω, 3 m (9.8 ft) Cable 3: GPS 26 dB gain, SMA(m), 50 Ω, 3 m (9.8 ft)
2000-1645-R	694 MHz to 894 MHz 3 dBi peak gain, 1700 MHz to 2700 MHz 3 dBi peak gain, N(m), 50 Ω, 3 m (9.8 ft)
2000-1646-R	750 MHz to 1250 MHz 3 dBi peak gain, 1650 MHz to 2000 MHz 5 dBi peak gain, 2100 MHz to 2700 MHz 3 dBi peak gain, N(m), 50 Ω, 3 m (9.8 ft)
2000-1648-R	1700 MHz to 6000 MHz 3 dBi peak gain, N(m), 50 Ω, 3 m (9.8 ft)

### PIM Alert

#### PIM Alert LTE



Anritsu has created a new PIM Alert application that uses the built in Spectrum Analyzer of Anritsu touchscreen hand-held test equipment to check the Uplink Band of mobile carriers for the possibility of PIM (Passive Intermodulation).

This application is complimentary to Anritsu's PIM Master product line which will provide an accurate measurement and locate the source of PIM problems.

PIM Alert can be downloaded for free of charge from the Anritsu website product page, and installed into the following Anritsu hand-held instruments, MT8220T, MS2720T, MS271xE, MT821xE, S332E & S362E. PIM Alert uses the easyTest™ script capability.

## BTS Master™ MT8220T Ordering Information

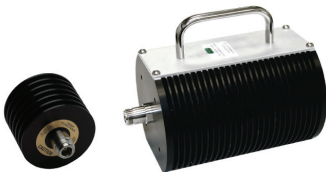
### Optional Accessories (continued)

#### Bandpass Filters



Part Number	Description
1030-114-R	806 MHz to 869 MHz, N(m) to SMA(f), 50 Ω
1030-109-R	824 MHz to 849 MHz, N(m) to SMA(f), 50 Ω
1030-110-R	880 MHz to 915 MHz, N(m) to SMA(f), 50 Ω
1030-111-R	1850 MHz to 1910 MHz, N(m) to SMA(f), 50 Ω
1030-112-R	2400 MHz to 2484 MHz, N(m) to SMA(f), 50 Ω
1030-105-R	890 MHz to 915 MHz Band, 0.41 dB loss, N(m) to SMA(f), 50 Ω
1030-106-R	1710 MHz to 1790 MHz Band, 0.34 dB loss, N(m) to SMA(f), 50 Ω
1030-107-R	1910 MHz to 1990 MHz Band, 0.41 dB loss, N(m) to SMA(f), 50 Ω
1030-149-R	High Pass, 150 MHz, N(m) to N(f), 50 Ω
1030-150-R	High Pass, 400 MHz, N(m) to N(f), 50 Ω
1030-151-R	High Pass, 700 MHz, N(m) to N(f), 50 Ω
1030-152-R	Low Pass, 200 MHz, N(m) to N(f), 50 Ω
1030-153-R	Low Pass, 550 MHz, N(m) to N(f), 50 Ω
1030-155-R	2500 MHz to 2700 MHz, N(m) to N(f), 50 Ω
1030-178-R	1920 MHz to 1980 MHz, N(m) to N(f), 50 Ω
1030-179-R	777 MHz to 787 MHz, N(m) to N(f), 50 Ω
1030-180-R	2500 MHz to 2570 MHz, N(m) to N(f), 50 Ω
2000-1684-R	791 MHz to 821 MHz, N(m) to N(f), 50 Ω
2000-1734-R	Bandpass Filter, 699 MHz to 715 MHz, N(m) and N(f), 50 Ω
2000-1735-R	Bandpass Filter, 776 MHz to 788 MHz, N(m) and N(f), 50 Ω
2000-1736-R	Bandpass Filter, 815 MHz to 850 MHz, N(m) and N(f), 50 Ω
2000-1737-R	Bandpass Filter, 1711 MHz to 1756 MHz, N(m) and N(f), 50 Ω
2000-1738-R	Bandpass Filter, 1850 MHz to 1910 MHz, N(m) and N(f), 50 Ω
2000-1739-R	Bandpass Filter, 880 MHz to 915 MHz, N(m) and N(f), 50 Ω
2000-1740-R	Bandpass Filter, 1710 MHz to 1785 MHz, N(m) and N(f), 50 Ω
2000-1741-R	Bandpass Filter, 1920 MHz to 1980 MHz, N(m) and N(f), 50 Ω
2000-1742-R	Bandpass Filter, 832 MHz to 862 MHz, N(m) and N(f), 50 Ω
2000-1743-R	Bandpass Filter, 2500 MHz to 2570 MHz, N(m) and N(f), 50 Ω
2000-1799-R	Bandpass Filter, 2305 MHz to 2320 MHz, N(m) and N(f), 50 Ω

#### Attenuators



Part Number	Description
3-1010-122	20 dB, 5 W, DC to 12.4 GHz, N(m) to N(f)
42N50-20	20 dB, 5 W, DC to 18 GHz, N(m) to N(f)
42N50A-30	30 dB, 50 W, DC to 18 GHz, N(m) to N(f)
3-1010-123	30 dB, 50 W, DC to 8.5 GHz, N(m) to N(f)
1010-127-R	30 dB, 150 W, DC to 3 GHz, N(m) to N(f)
3-1010-124	40 dB, 100 W, DC to 8.5 GHz, N(m) to N(f), Uni-directional
1010-121	40 dB, 100 W, DC to 18 GHz, N(m) to N(f), Uni-directional
1010-128-R	40 dB, 150 W, DC to 3 GHz, N(m) to N(f)

#### CPRI RF Measurement Accessories

67-12-R	Optical Tap; Single Mode/Multi Mode
67-13-R	Optical Tap; Single Mode
68-5-R	SFP (Optical Module), 4.25G, 850nm, 500m
68-6-R	SFP+ (Optical Module), 8G FC/10G SR 850nm
68-7-R	SFP (Optical Module), 2.7G, 1310nm, 15km
68-8-R	SFP+ (Optical Module), 10G LR 1310nm
2000-1849-R	ESD Box for SFP (Optical Modules)
2100-29-R	Fiber Optic Cable, 3m, LC/UPC, Single Mode (SM), Simplex
2100-30-R	Fiber Optic Cable, 10m, LC-SC, Multi-Mode (MM), Simplex
2100-31-R	Fiber Optic Cable, 3m, LC/UPC, Single Mode (SM), Duplex
971-14-R	Ferrule cleaner, 2.5mm SC
971-15-R	Ferrule cleaner, 1.25mm LC
971-16-R	Fiber ferrule cleaner

• **United States**

**Anritsu Company**

1155 East Collins Boulevard, Suite 100,  
Richardson, TX, 75081 U.S.A.  
Toll Free: 1-800-267-4878  
Phone: +1-972-644-1777  
Fax: +1-972-671-1877

• **Canada**

**Anritsu Electronics Ltd.**

700 Silver Seven Road, Suite 120,  
Kanata, Ontario K2V 1C3, Canada  
Phone: +1-613-591-2003  
Fax: +1-613-591-1006

• **Brazil**

**Anritsu Eletrônica Ltda.**

Praça Amadeu Amaral, 27 - 1 Andar  
01327-010 - Bela Vista - Sao Paulo - SP - Brazil  
Phone: +55-11-3283-2511  
Fax: +55-11-3288-6940

• **Mexico**

**Anritsu Company, S.A. de C.V.**

Av. Ejército Nacional No. 579 Piso 9, Col. Granada  
11520 México, D.F., México  
Phone: +52-55-1101-2370  
Fax: +52-55-5254-3147

• **United Kingdom**

**Anritsu EMEA Ltd.**

200 Capability Green, Luton, Bedfordshire LU1 3LU, U.K.  
Phone: +44-1582-433280  
Fax: +44-1582-731303

• **France**

**Anritsu S.A.**

12 avenue du Québec, Batiment Iris 1-Silic 612,  
91140 Villebon-sur-Yvette, France  
Phone: +33-1-60-92-15-50  
Fax: +33-1-64-46-10-65

• **Germany**

**Anritsu GmbH**

Nemetschek Haus, Konrad-Zuse-Platz 1  
81829 München, Germany  
Phone: +49-89-442308-0  
Fax: +49-89-442308-55

• **Italy**

**Anritsu S.r.l.**

Via Elio Vittorini 129, 00144 Roma Italy  
Phone: +39-06-509-9711  
Fax: +39-06-502-2425

• **Sweden**

**Anritsu AB**

Kistagångens 20B, 164 40 KISTA, Sweden  
Phone: +46-8-534-707-00  
Fax: +46-8-534-707-30

• **Finland**

**Anritsu AB**

Teknobulevardi 3-5, FI-01530 VANTAA, Finland  
Phone: +358-20-741-8100  
Fax: +358-20-741-8111

• **Denmark**

**Anritsu A/S**

Kay Fiskers Plads 9, 2200 Copenhagen S, Denmark  
Phone: +45-7211-2200  
Fax: +45-7211-2210

• **Russia**

**Anritsu EMEA Ltd.**

**Representation Office in Russia**

Tverskaya str. 16/2, bld. 1, 7th floor.  
Moscow, 125009, Russia  
Phone: +7-495-363-1694  
Fax: +7-495-935-8962

• **Spain**

**Anritsu EMEA Ltd.**

**Representation Office in Spain**

Edificio Cuzco IV, Po. de la Castellana, 141, Pta. 8  
28046, Madrid, Spain  
Phone: +34-915-726-761  
Fax: +34-915-726-621

• **United Arab Emirates**

**Anritsu EMEA Ltd.**

**Dubai Liaison Office**

P O Box 500413 - Dubai Internet City  
Al Thuraya Building, Tower 1, Suite 701, 7th floor  
Dubai, United Arab Emirates  
Phone: +971-4-3670352  
Fax: +971-4-3688460

• **India**

**Anritsu India Pvt Ltd.**

2nd & 3rd Floor, #837/1, Binnamangla 1st Stage,  
Indiranagar, 100ft Road, Bangalore - 560038, India  
Phone: +91-80-4058-1300  
Fax: +91-80-4058-1301

• **Singapore**

**Anritsu Pte. Ltd.**

11 Chang Charn Road, #04-01, Shriro House  
Singapore 159640  
Phone: +65-6282-2400  
Fax: +65-6282-2533

• **P. R. China (Shanghai)**

**Anritsu (China) Co., Ltd.**

27th Floor, Tower A,  
New Caohejing International Business Center  
No. 391 Gui Ping Road Shanghai, Xu Hui Di District,  
Shanghai 200233, P.R. China  
Phone: +86-21-6237-0898  
Fax: +86-21-6237-0899

• **P. R. China (Hong Kong)**

**Anritsu Company Ltd.**

Unit 1006-7, 10/F., Greenfield Tower, Concordia Plaza,  
No. 1 Science Museum Road, Tsim Sha Tsui East,  
Kowloon, Hong Kong, P. R. China  
Phone: +852-2301-4980  
Fax: +852-2301-3545

• **Japan**

**Anritsu Corporation**

8-5, Tamura-cho, Atsugi-shi,  
Kanagawa, 243-0016 Japan  
Phone: +81-46-296-6509  
Fax: +81-46-225-8359

• **Korea**

**Anritsu Corporation, Ltd.**

5FL, 235 Pangyoyeok-ro, Bundang-gu, Seongnam-si,  
Gyeonggi-do, 13494 Korea  
Phone: +82-31-696-7750  
Fax: +82-31-696-7751

• **Australia**

**Anritsu Pty Ltd.**

Unit 20, 21-35 Ricketts Road,  
Mount Waverley, Victoria 3149, Australia  
Phone: +61-3-9558-8177  
Fax: +61-3-9558-8255

• **Taiwan**

**Anritsu Company Inc.**

7F, No. 316, Sec. 1, Neihu Rd., Taipei 114, Taiwan  
Phone: +886-2-8751-1816  
Fax: +886-2-8751-1817



The Master Users Group is an organization dedicated to providing training, technical support, networking opportunities and links to Master product development teams. As a member you will receive the Insite Quarterly Newsletter with user stories, measurement tips, new product news and more.

Visit us to register today: [www.anritsu.com/MUG](http://www.anritsu.com/MUG)

**Training at Anritsu**

Anritsu has designed courses to help you stay up to date with technologies important to your job.

For available training courses visit: [www.anritsu.com/training](http://www.anritsu.com/training)

Please Contact: